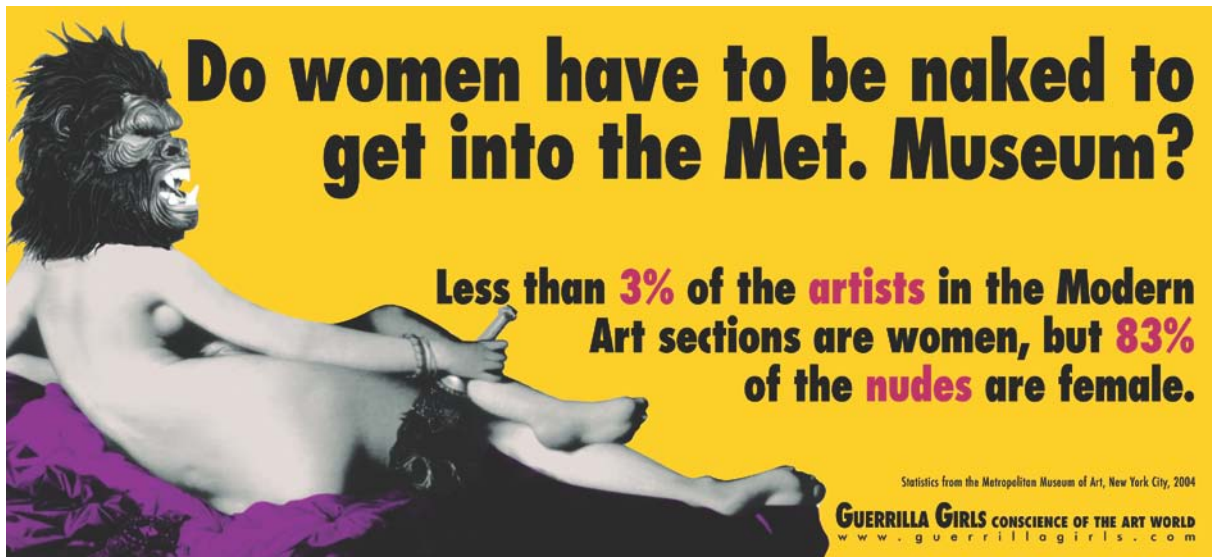




RUTGERS
NEWARK

Paul Robeson Galleries MEDIA RELEASE

WOMENS HISTORY MONTH 2009 GUERRILLA GIRLS



Making Monkey Business with the Guerrilla Girls 6PM – 7.30PM Wednesday March 11, 2009

Location: Essex West 231, Second Floor, Robeson Campus Center, Rutgers University – Newark Campus

In conjunction with Women's History Month and the Paul Robeson Galleries exhibition "*Hysteria: Past Yet Present*", we are proud to present the Guerrilla Girls. The Guerrilla Girls are Wofeminist masked avengers in the tradition of anonymous do-gooders like Robin Hood, Wonder Woman and Batman. They use facts, humor and outrageous visuals to expose sexism, racism and corruption in politics, art, film and pop culture. Their work has been passed around the world by their tireless supporters. They are authors of stickers, billboards, many, many posters and other projects (including a large-scale installation for the 2005 Venice Biennale) and several books including *The Guerrilla Girls' Bedside Companion to the History of Western Art*, *Bitches, Bimbos and Ballbreakers*; *The Guerrilla Girls' Illustrated Guide to Female Stereotypes*, and *The Guerrilla Girls' Art Museum Activity Book*. Founding member Frida Kahlo will talk about their work, their philosophy of activism, and their campaign against the appalling lack of ethics in the art world.

RSVP preferred but not required: galleryr@andromeda.rutgers.edu or 973 353 1610

FREE ENTRY ALL WELCOME

HYSTERIA: PAST YET PRESENT

The Main Gallery 2/5/09 – 4/9/09



Cortney ANDREWS *Eros and Thanatos*, 2008, C-Print, 30" x 40", Courtesy of the artist.

From the Latin *hystericus* and the Greek *hysterikos*, both referring to the uterus, hysteria has not always been a condition that only affects females, but it has certainly most broadly been known as such. For the purposes of this exhibition, the focus is on the female condition and experience. Hysteria has assumed copious avatars throughout history, each incarnation adopting a guise reflecting the society in which the diagnosis was made. The transformative nature of hysteria (in terms of source, symptoms and diagnosis), is explored through the work in this exhibition. There is a deliberate focus in this exhibition on a period in the nineteenth century when hysteria evolved from a physical disease into one that incorporated both physical and psychological elements. A study of the history of hysteria demonstrates a societal propensity for linking the condition to prevailing norms of the time rather than identifying hysteria as a condition independent of its environment. Despite ongoing changes in the description, hysterical individuals have always been seen as aberrant, their behavior setting them apart from the community in which they live, be it ancient Greece or a contemporary city. **Artists in this exhibition: Cortney ANDREWS, Beth B, Zoe BELOFF, Mary BILLYOU, Tammy Rae CARLAND, Jennifer DUDLEY, Carson FOX, The Guerrilla Girls, Lynne HELLER, Ruth HUTCHINSON, Georgette MANIATIS, Jennifer MAZZA, Cindy REHM, Babs REINGOLD, Sarah SUDHOFF, Claire WATSON, Shoshanna WEINBERGER.**

SUPPORT FOR THIS EVENT IS PROVIDED BY THE ROBESON CAMPUS CENTER, THE NEW JERSEY STATE COUNCIL ON THE ARTS/DEPARTMENT OF STATE, THE GERALDINE R. DODGE FOUNDATION, THE CULTURAL PROGRAMMING COMMITTEE & THE CHANCELLORS OFFICE – RUTGERS NEWARK, INSTITUTE FOR WOMEN & ART & THE FEMINIST ART PROJECT, RUTGERS – NEW BRUNSWICK, THE RUTGERS COMMITTEE TO ADVANCE OUR COMMON PURPOSES, AND BY PRIVATE DONATIONS.

FALL EXHIBITION 2010

Bittersweet: The Chocolate Show

Main Gallery – September 1, 2010 – November 10, 2010

Reception Thursday, September 16, 2010 5pm-7pm



Stefano CAGOL, *Rat Game*, 2008, Black and white chocolate, almonds, rat poison, paper cardboard and Plexiglas box, Dimensions variable, Courtesy of the artist and Priska C. Juschka Fine Art, New York.

This exhibition includes the work of artists who reference chocolate either directly or indirectly, as a medium or subject matter, to explore issues of cultural, social or historical interest. Some of the issues addressed include: the history of chocolate, social implications of chocolate, the complexity of globalized food production and distribution, food processing (additives, genetic alterations), and the representation of chocolate in popular culture.

Artists in the exhibition: Carmen ALVARADO, Donald BAECHLER, Bill BURNS, Stefano CAGOL, Hector CANONGE, Johannah HERR, Margie KUHN, Priscilla MONGE, Vik MUNIZ, Joy NAGY, Chuck RAMIREZ, Joseph Gerard SABATINO, Stephen SHANABROOK, Robert WATTS

Paul Robeson Galleries

MEDIA RELEASE

ONGOING EXHIBITIONS

RU Pride: Out and Proud Pequod Deck Gallery

September 8, 2009 – December 2010

RU-PRIDE, an on-campus student group, is dedicated to providing a safe and nurturing environment for LGBTQA (Lesbian, Gay, Bisexual, Transgendered, Questioning, Allied) people to interact. The group seeks to promote the voices of members of the LGBTQA community, and also addresses issues of identity, gender expression and sexual orientation. The three artists exhibited here are members or friends of RU-PRIDE.

New Millennium Butch Orbit I Gallery

March 3, 2010 – December 2010

Peggie Miller, creator of *NMB: New Millennium Butch*, is determined to bring butch women out of “the shadows” and into mainstream society. Miller, who identifies herself as a butch woman, began the New Millennium Butch fashion shows in Newark, New Jersey, in 2000. These annual events, which showcase butch identified models, designers, and entertainers, have enjoyed great success over the last decade. To celebrate this success, Miller created the table book, *NMB: New Millennium Butch*. She writes, “I decided to take us to the next level and bring us out of the darkness into the light for the whole world to see.”

Genocide: Who Are the Senior Khmer Rouge Leaders to be Judged?

Presented by the Documentation Center of Cambodia in partnership with the Center for the Study of Genocide, Conflict Resolution, and Human Rights and the Peace, Justice and Reconciliation Center at Bergen Community College

Orbit II Gallery

August 30, 2010 – December 2010

The Documentation Center of Cambodia (DC-Cam) is an independent non-governmental Cambodian research institute seeking the truth about the grave human rights abuses of Democratic Kampuchea period. It is the world’s largest repository of primary documents on the Khmer Rouge and serves as the major source of documentary evidence for the Extraordinary Chambers in the Courts of Cambodia for the Prosecution of Crimes Committed During the Period of Democratic Kampuchea (ECCC). The ECCC is expected to try the four surviving senior Khmer Rouge leaders in 2011. The objective of this traveling exhibition is to educate and inform the Cambodian people and the international public about this upcoming trial and the parties involved. The exhibition will travel to Cambodian cities and villages throughout 2010 and 2011, as well as to several major United States universities, and to Sweden, Belgium, and Denmark. The mission of the exhibition and DC-Cam is to break the silence, move towards reconciliation, and provide the support of an international community to the survivors of the Khmer Rouge.

The Nova Gallery

The Nova Gallery features a display of works by participants in Paul Robeson Galleries’ outreach and education programs.

ALL PAUL ROBESON GALLERIES EXHIBITIONS ARE FREE AND OPEN TO THE PUBLIC

Gallery Website <http://andromeda.rutgers.edu/artgallery/>

For additional information please contact:

Carla Capizzi, Senior Public Relations Specialist, Telephone 973 353 x17, Email capizzi@andromeda.rutgers.edu

Anonda Bell, Director & Curator, Paul Robeson Galleries, Telephone 973 353 1609, Email anonda@andromeda.rutgers.edu

The Paul Robeson Galleries’ programs are supported, in part, by a grant from the New Jersey State Council on the Arts/Department of State, a Partner Agency of the National Endowment for the Arts, the Geraldine Dodge Foundation, and by private donations. We are also supported by the Robeson Campus Center, the Office of the Chancellor and the Cultural Programming Committee, Rutgers-Newark.



FALL EXHIBITIONS 2011

Lift Off: Earthlings and the Great Beyond

Main Gallery – September 1, 2011 – January 5, 2012

Reception Thursday, September 15, 2011 5pm-7pm



Robert Weingarten, *Portraits Without People: Buzz Aldrin, 2007*, pigment print on Epson Ultra Smooth Fine Art Paper, 40 x 60 inches, (c) Robert Weingarten, courtesy Marlborough Gallery, New York

As the National Aeronautics and Space Administration (or NASA, best known as the agency that first put a man on the moon) puts an end its moon program, the Paul Robeson Galleries presents an exhibition based on ideas and issues surrounding space: perceptions of future life based in space; space agencies (i.e. NASA); the Russian space agency; race for space; NASA byproducts; objects in space; ways of viewing space from earth; the possibility of other life forms in space; space travel, the depiction of space in popular culture, design for space, and the life of an astronaut.

Artists in the exhibition: Sarah BEDNAREK, Leah BEEFERMAN, Robbie CONAL, Angie DRAKOPOULOS, Experimental Skeleton, McLean FAHNESTOCK, Rebecca Hackemann, Scott LISTFIELD, So Yoon LYM, Kate MCQUILLEN, Lauren ORCHOWSKI, Jonathon PELLITTERI, Jean-Pierre ROY, Adam RYDER, Jeff SCHMUKI, Christopher ULIVO, Robert WEINGARTEN

Paul Robeson Galleries

MEDIA RELEASE

SATALLITE EXHIBITIONS

Lembranca/Resistencia, Memory/Resistance: Adrienne Wheeler Orbit I Gallery

September 1, 2011 – January 5, 2012

Adrienne Wheeler's work is informed by African ancestral and spiritual practices, primarily Bakongo, using carefully selected materials as "Nkisi" (sacred medicine) to give spiritual healing to individuals and communities. Wheeler offers her pieces as a contribution to the struggle to end oppression and human suffering.

Points of View: Selections from the Collection of Rutgers - Newark Orbit II Gallery

September 1, 2011 – January 5, 2012

Works that have been purchased by or donated to the Rutgers-Newark Campus, ranging in style from historic to contemporary.

In Case Of Emergency Break Glass: Tara Raye Russo Pequod Deck Gallery

September 1, 2011 – January 5, 2012

Tara Raye Russo seeks to depart from simply documenting her surroundings, working instead to layer meanings in her artworks with the use of signs and symbols. In this exhibition, she raises questions about the definition and value of art.

The Nova Gallery

The Nova Gallery features a display of works by participants in Paul Robeson Galleries' outreach and education programs.

ALL PAUL ROBESON GALLERIES EXHIBITIONS ARE FREE AND OPEN TO THE PUBLIC

Gallery Website <http://andromeda.rutgers.edu/artgallery/>

For additional information please contact:

Carla Capizzi, Senior Public Relations Specialist, Telephone 973 353 x17, Email capizzi@andromeda.rutgers.edu

Anonda Bell, Director & Curator, Paul Robeson Galleries, Telephone 973 353 1609, Email anonda@andromeda.rutgers.edu

The Paul Robeson Galleries' programs are supported, in part, by a grant from the New Jersey State Council on the Arts/Department of State, a Partner Agency of the National Endowment for the Arts, the Geraldine R. Dodge Foundation, and by private donations. We are also supported by the Robeson Campus Center, the Office of the Chancellor and the Cultural Programming Committee, Rutgers-Newark.



NEWS RELEASE

Free Public Exhibition at Rutgers' Paul Robeson Galleries, Newark, through July 27
GLASSBOOKS EXHIBITION BREAK THE SILENCE FOR TRAUMA
SURVIVORS, WHO LET THE SCULPTURES SPEAK FOR THEM

(NEWARK, N.J., May x, 2011) – They don't make a sound, but dozens of glass sculptures at Rutgers University, Newark, have a lot to say about some provocative issues, ranging from self-injury and domestic violence to advocacy for victims and the need to find peace.

"Din of Murmurs: Nick Kline and the GlassBook Project" opened May 26 at the Paul



Robeson Galleries, its first stop on a tour of well-known art institutions that will include The Grounds for Sculpture in Hamilton, New Jersey. The exhibition features 46 sculptures, or glass books, drawn from seven collections of the GlassBook Project, sculptures that aim to help build understanding of different human responses to trauma. The project brings together students with survivors, who share their trauma experience and explain how certain behaviors, such as self injury, eating disorders, aggression and substance abuse, helped them cope.

The Finding Peace glass book

"Din of Murmurs" will be on display through July 27. The June 4 opening reception, from 2-4 p.m., will include poetry readings and a panel discussion with students and participants from the various GlassBook collections. The galleries are in the Paul Robeson Campus Center, 350 Dr. Martin Luther King Jr. Blvd., Newark. Hours are 10 a.m. – 5 p.m., Mon. – Thursday, and June 4 from noon – 5 p.m. For gallery information: 973 353 1610, galleryr@andromeda.rutgers.edu, or <http://andromeda.rutgers.edu/artgallery/>

The exhibition also features abstract photographs of the GlassBooks taken by Kline, a Rutgers University, Newark, professor and artist. The GlassBooks Project is a creation of Kline's, in collaboration with Helga Luest of Witness Justice, a national nonprofit organization that provides support and advocacy for victims of violence and trauma. Other professional artists are brought in as specialists to work with students in creating collections, including Rutgers professor Keary Rosen, and book artist Sarah Stengle.

Among the sculptures featured at Robeson Galleries are works from the initial GlassBooks project -- created in 2009 by some of Kline's Rutgers-Newark students in collaboration with trauma survivors and mental health experts -- and a large-scale book, "Finding Peace," created this spring by students from Newark's South 17th Street School who were mentored by Rutgers students in the MCJ Housing Scholars program. "Finding Peace" was previously exhibited at the Newark Peace Education Summit and at the U.S. Department of Health and Human Services' National Children's Mental Health Awareness Day event in Washington, D.C.

For more information about "Din of Murmurs," please contact Nick Kline, 973/353-5600, and Helga Luest, 301/846-9110. For more information about the GlassBook project, see <http://www.glassbookproject.org/> and <http://www.witnessjustice.org>

NEWS RELEASE

THE ARTISTIC SIDES OF MEDICINE, JAZZ ARTIFACTS ARE PART OF VISUAL ARTS SCENE AT RUTGERS UNIVERSITY IN NEWARK

(Newark, N.J., Sept. 8, 2012) -- How do artists depict health and healing in their work? What kind of art treasures are hidden in a jazz archive? Come find out at the Paul Robeson Galleries of Rutgers University in Newark and the John Cotton Dana Library's Dana Gallery. All galleries are open to the public free of charge. All dates and locations are subject to change; for updated information and additional events, visit www.newark.rutgers.edu/arts. *Paul Robeson Campus Center and the Dana Library are wheelchair-accessible.*

EXHIBITIONS AT THE PAUL ROBESON GALLERIES, PAUL ROBESON CAMPUS CENTER, 350 DR. MARTIN LUTHER KING JR. BLVD.

Mon.–Thursday, 10 a.m.–5 p.m.; info: 973.353.1610; gallerystaff@andromeda.rutgers.edu, or <http://andromeda.rutgers.edu/artgallery/>. Media contact: Anonda Bell, director and curator, Paul Robeson Galleries, 973/353-1609, or anonda@andromeda.rutgers.edu

Through Jan. 9, 2013, Main Gallery (opening reception: Sept 13, 5-7 p.m.)

What Cannot Be Cured Must Be Endured

This exhibition explores artistic representations of healing, medicine, spiritual and alternative interventions or preventions of illness, and the frailty of the human form.

Image: Roberto Osti, "Harlequin," 2008, watercolor on paper, 52"x57", courtesy of the artist.

Through Jan. 9, Orbit 1 Gallery

Farah Ossouli: Ars Poetica

Iranian-born artist Farah Ossouli engages issues of gender roles, drawing inspiration from iconic western and Persian art, the decorative arts, and contemporary Persian poetry.

Through Jan. 9, 2013, Orbit 2 Gallery

Dreamtime IV: So Yoon Lym

So Yoon Lym's striking acrylic paintings of braided hairstyles are both richly detailed and powerfully graphic, raising questions of representation, abstraction, and identity.

Through Jan. 9, 2013, Pequod Deck

The True History of Puss in Boots

A contemporary reworking of the classic tale. Illustrations by Henry Charles.

Through July 24, 2013, Messier Gallery

Soma, Trickster & Myself: David D. Oquendo

David D. Oquendo uses the vernacular of pop culture and religious iconography to engage his generation in questions of faith and personal growth.

EXHIBITIONS AT JOHN COTTON DANA LIBRARY, 185 UNIVERSITY AVE., NEWARK

Nov. 1, 2012 – Jan. 25, 2013, Dana Gallery, 4th Floor

(library hours info: www.libraries.rutgers.edu/rul/h_and_d/h_and_d.shtml)

Rutgers Institute of Jazz Studies: An illustrated history

An exhibit describing the history of the Institute conveyed through items from the collections.

Events and exhibits are supported in part by grants from the Cultural Programming Committee at Rutgers University, Newark. Additional support for selected programs has been received from the New Jersey State Council on the Arts.

GETTING TO RUTGERS UNIVERSITY IN NEWARK

BY MASS TRANSIT: Rutgers-Newark can be reached by New Jersey Transit buses and trains, the PATH train and Amtrak from New York City, and by the Newark Light Rail, Washington Street Station or Broad Street Station.

BY CAR: Rutgers-Newark can be reached by the Garden State Parkway, New Jersey Turnpike, Routes 95, 21, 78, and 280, and the Lincoln and Holland tunnels. Metered parking is available on University Avenue. Other parking: Rutgers-Newark's parking garage (200 University Ave.) or the Bradley Hall Lot. Printable maps and driving directions at:

www.newark.rutgers.edu/maps/index.php

Paul Robeson Galleries

MEDIA RELEASE

SPRING EXHIBITIONS 2012

The Wicked Twins: Fame and Notoriety

Main Gallery – January 17 – April 19, 2012

Reception Thursday, January 26, 2012 5pm-7pm

The United States has been described as having a fame hungry culture, which has been fuelled in recent years by the plethora of communication devices, social networking sites which facilitate the dispersal of information in real time, and a slew of reality programming on both television and the internet. This exhibition will focus on the work of artists who address ideas about fame and infamy, celebrity culture, current idols, imitation of celebrities, and attempts to secure at least 15 minutes in the spotlight.

Artists in this exhibition: Susan ANDERSON, Emily Bennett BECK, Meredith DANLUCK, Richard DREW, Daniel EDWARDS, James HORNER, Christa MAIWALD, Polixeni PAPAPETROU, Tom SANFORD, Mark STOCKTON, Beth WHITNEY

SATELLITE EXHIBITIONS

As I See It: Julie Dermansky Documents a World of Changes Orbit 1 Gallery

January 26 - July 25, 2012

Multi-media artist Julie Dermansky travels the world, photographing stories of social, environmental, and political change. "For me the connection between changing politics and global warming is easy to explain-as the world's climate changes and economic conditions become more dire, protest/revolution will follow. Governments are run by and for the one percent," Dermansky says, but "the 99 is rising up."

Dermansky is an Affiliate Scholar at Rutgers' Center for the Study of Genocide, Conflict Resolution, and Human Rights whose work has been published internationally by clients including The Washington Post, The Guardian, Essence Magazine, Fund for Armenian Relief, and The Times of London and has her own column on the Atlantic's website. Her work has been exhibited in galleries across the USA and Europe.

Life After Incarceration: Long Shot or Picture Perfect? Orbit 2 Gallery

January 17 - July 25, 2012

Funded by the National Institute on Mental Health through the Center on Behavioral Health Services & Criminal Justice Research, the research project "Living Re-entry from Inside the Community" was led by Liliane Windsor, Ph.D., MSW and Nancy Wolff, Ph.D. to seek to understand the lived experience of individuals transitioning from incarceration into communities in Newark. Ten individuals with a history of incarceration were recruited to participate in the study. Each participant received a digital camera and was asked to take photographs to depict his or her experiences with re-entry. Photographs were to depict the challenges of re-entry, resources

Paul Robeson Galleries

MEDIA RELEASE

available in Newark to aid in the transition, and potential solutions to the challenges. Participants reviewed one another's photos and discussed their experiences in a focus group.

The paintings were commissioned as part of the project, to depict some of the major challenges and obstacles that individuals from disadvantaged communities may face in the struggle to function successfully in society.

The Grand Conversationalist: Jacques Bredy Pequod Deck Gallery

January 17, 2011 - July 25, 2012

Newark artist Jacques Bredy employs traditional methods to create his artwork, which he calls "honest, obsessive, arduous, and liberating." He continues, "Subtlety of texture, the sensitive characteristic of line, the fluid aspects of gesture, form and tonality are integral to the process."

The Nova Gallery

The Nova Gallery features a display of works by participants in Paul Robeson Galleries' outreach and education programs.

ALL PAUL ROBESON GALLERIES EXHIBITIONS ARE FREE AND OPEN TO THE PUBLIC

Gallery Website <http://andromeda.rutgers.edu/artgallery/>

For additional information please contact:

Carla Capizzi, Senior Public Relations Specialist, Telephone 973 353 x17, Email capizzi@andromeda.rutgers.edu

Anonda Bell, Director & Curator, Paul Robeson Galleries, Telephone 973 353 1609, Email anonda@andromeda.rutgers.edu

The Paul Robeson Galleries' programs are supported, in part, by a grant from the New Jersey State Council on the Arts/Department of State, a Partner Agency of the National Endowment for the Arts, and by private donations. We are also supported by the Robeson Campus Center, the Office of the Chancellor and the Cultural Programming Committee, Rutgers-Newark.



Paul Robeson Galleries

MEDIA RELEASE

(NEWARK, NJ, Jan. 23) – The Paul Robeson Galleries of Rutgers University in Newark have announced their spring 2012 schedule. All galleries are open to the public free of charge. All dates and locations are subject to change; for updated information and additional events, visit www.newark.rutgers.edu/arts. Paul Robeson Campus Center is wheelchair-accessible.

SPRING EXHIBITIONS 2012

The Wicked Twins: Fame and Notoriety, Main Gallery – through April 19, 2012, Reception Thursday, Jan. 26, 2012 5 p.m -7 p.m.

The United States has been described as having a fame hungry culture, which has been fuelled in recent years by the plethora of communication devices, social networking sites which facilitate the dispersal of information in real time, and a slew of reality programming on both television and the internet. This exhibition will focus on the work of artists who address ideas about fame and infamy, celebrity culture, current idols, imitation of celebrities, and attempts to secure at least 15 minutes in the spotlight.

Artists in this exhibition: Susan ANDERSON, Emily Bennett BECK, Meredith DANLUCK, Richard DREW, Daniel EDWARDS, James HORNER, Christa MAIWALD, Polixeni PAPAPETROU, Tom SANFORD, Mark STOCKTON, Beth WHITNEY.

SATELLITE EXHIBITIONS

As I See It: Julie Dermansky Documents a World of Changes, Orbit 1 Gallery
Jan. 26 - July 25, 2012

Multi-media artist Julie Dermansky travels the world, photographing stories of social, environmental, and political change. "For me the connection between changing politics and global warming is easy to explain-as the world's climate changes and economic conditions become more dire, protest/revolution will follow. Governments are run by and for the one percent," Dermansky says, but "the 99 is rising up."

Dermansky is an Affiliate Scholar at Rutgers' Center for the Study of Genocide, Conflict Resolution, and Human Rights whose work has been published internationally by clients including The Washington Post, The Guardian, Essence Magazine, Fund for Armenian Relief, and The Times of London and has her own column on the Atlantic's website. Her work has been exhibited in galleries across the USA and Europe.

Life After Incarceration: Long Shot or Picture Perfect? Orbit 2 Gallery
through July 25, 2012

Funded by the National Institute on Mental Health through the Center on Behavioral Health Services & Criminal Justice Research, the research project "Living Re-entry from Inside the Community" was led by Liliane Windsor, Ph.D., MSW and Nancy Wolff, Ph.D. to seek to understand the lived experience of individuals transitioning from incarceration into communities in Newark. Ten individuals with a history of incarceration were recruited to participate in the study. Each participant received a digital camera and was asked to take

Paul Robeson Galleries

MEDIA RELEASE

photographs to depict his or her experiences with re-entry. Photographs were to depict the challenges of re-entry, resources available in Newark to aid in the transition, and potential solutions to the challenges. Participants reviewed one another's photos and discussed their experiences in a focus group. The paintings were commissioned as part of the project, to depict some of the major challenges and obstacles that individuals from disadvantaged communities may face in the struggle to function successfully in society.

The Grand Conversationalist: Jacques Bredy, Pequod Deck Gallery, through July 25, 2012

Newark artist Jacques Bredy employs traditional methods to create his artwork, which he calls "honest, obsessive, arduous, and liberating." He continues, "Subtlety of texture, the sensitive characteristic of line, the fluid aspects of gesture, form and tonality are integral to the process."

The Nova Gallery

The Nova Gallery features a display of works by participants in Paul Robeson Galleries' outreach and education programs.

ALL PAUL ROBESON GALLERIES EXHIBITIONS ARE FREE AND OPEN TO THE PUBLIC

Gallery Website <http://andromeda.rutgers.edu/artgallery/>

For additional information please contact:

- Carla Capizzi, Senior Public Relations Specialist, 973 353-5263; e-mail capizzi@andromeda.rutgers.edu
- Anonda Bell, Director & Curator, Paul Robeson Galleries, 973 353 1609; e-mail anonda@andromeda.rutgers.edu

The Paul Robeson Galleries' programs are supported, in part, by a grant from the New Jersey State Council on the Arts/Department of State, a Partner Agency of the National Endowment for the Arts, and by private donations. We are also supported by the Robeson Campus Center, the Office of the Chancellor and the Cultural Programming Committee, Rutgers-Newark.

FALL EXHIBITIONS 2013



Polixeni Papapetrou, "Salt Man," 2013, pigment ink print, 51.5"x51.5",
Courtesy of the artist and Jenkins Johnson Gallery, NY

Hair

Main Gallery – September 3 – December 24, 2013

Reception Thursday, September 12, 2013 5pm-7pm

Hair grows everywhere on the human body except the palms of the hands, soles of the feet, eyelids, and lips. This exhibition will explore many ways in which hair is artistically represented, including cultural, anthropological, historical, and physical.

Artists in this exhibition: Terry Boddie, Stephanie T. Booth, Flora Choi, Andrea Cote, Marisa DiPaola, Zachary Fabri, Cassandra Holden, Colby Jennings, Stephanie Keith, Jessica Lagunas, So Yoon Lym, Althea Murphy-Price, Polixeni Papapetrou, Babs Reingold, Annette Rusin, Yoland Skeete, Aaron Smith, Kristen Tinari, Winnie Truong, Jessica Tsai, Fo Wilson

Paul Robeson Galleries

MEDIA RELEASE

S A T E L L I T E E X H I B I T I O N S

An Invisible City Revealed: Sunmarie Allen-Burns

Orbit 1 Gallery

September 3 - December 24, 2013

Reception Thursday, September 12, 2013 5pm-7pm

Sunmarie Allen-Burns is a New Jersey artist and educator who seeks to challenge viewers' pre-conceived notions about life and to illuminate the innate beauty and goodness of the world around her. Having been raised in Newark, New Jersey, a common theme found throughout many of her works revolves around the hidden beauty of life in Newark.

Sunmarie Allen-Burns received her Bachelor of Fine Arts from Caldwell College. She holds dual teaching certificates in art and elementary education. Her work can be found in the permanent collections of the Newark Public Library and in private collections.

The Image Is the Message

Orbit 2 Gallery

September 3 – December 24, 2013

Reception Thursday, September 12, 2013 5pm-7pm

Curated by Patricia Kettenring, this exhibition features the work of prominent graphic designers Ned Drew and Ed Walter.

Pat Kettenring served for 11 years as the Executive Director of GlassRoots, Inc, a nonprofit glass arts and business skills program for youth. She was the Director of Business and the Arts at Rutgers-Newark for 23 years and a professor for the School of Public Affairs and Administration. She retired in 2012.

Ned Drew is a professor of graphic design at Rutgers University. He is the director of The Design Consortium, a student/teacher run design studio that focuses on non-profit, community-based projects. He is also a founding partner and creative director of the multi-disciplinary design firm, BRED based in NYC.

Ed Walter is the President and Design Director of Strategy Studio in NYC, where he has worked for almost thirty years. His work has included projects for clients in healthcare, technology, financial, professional services, and non-profit organizations. He is a faculty member at Parsons The New School for Design. He has been published widely and lectures on design, typography and branding.

Global Service in Action: Rutgers Students in Tanzania

Pequod Deck Gallery

September 3 – December 24, 2013

Reception Thursday, September 12, 2013 5pm-7pm

This exhibition features photographs from the Robeson International Leadership Exchange. This ten-day initiative based in Tanzania and Zanzibar, encourages students to engage models of leadership through a global lens. This partnership with the University of Dar es Salaam and the College of New Jersey prepares and challenges Rutgers students to collaborate with faculty, student leaders and community organizers who are actively working to create social, political and economic change within their communities.

Paul Robeson Galleries

MEDIA RELEASE

Inside Out: Perspectives on Social Justice by Carol Shapiro

Criminal Justice Gallery
Center for Law and Justice, 5th floor, 123 Washington Street, Newark NJ
September 3 – December 24, 2013

Reception Thursday, September 26, 2013 4pm-5pm

Carol Shapiro visited her first prison at the age of 16, and has since been a powerful force in pushing justice reform. She studied art and criminology at Carnegie Mellon University and founded a not-for-profit organization called Family Justice. Family Justice uses the visual and performing arts to raise awareness and organize interventions that engage social networks and staff of correctional facilities. Shapiro's life has seen an inextricable twining of her passions for art and reform.

Cake Soap Panorama: Kevin Darmanie

Messier Gallery
Robeson Campus Center, 3rd Floor
September 3, 2013 – July 30, 2014

A series of murals by Newark artist Kevin Darmanie, whose work melds such seemingly disparate elements as critical art theory, fine art techniques, and comic illustration. This amalgamation of images explores the conflict and opportunities that arise from the combination of two identities: Caribbean and American. Darmanie came to Newark from Trinidad & Tobago and has since used his work as a means to question ideas of perception, freedom, identity, and immigration.

The Nova Gallery

The Nova Gallery features a display of works by participants in Paul Robeson Galleries' outreach and education programs.

**Images are available for media use; please contact Caren King Choi, Gallery Manager & Education Coordinator,
Telephone 973 353 1625, Email ckarking@andromeda.rutgers.edu**

ALL PAUL ROBESON GALLERIES EXHIBITIONS ARE FREE AND OPEN TO THE PUBLIC

Gallery Website <http://artgallery.newark.rutgers.edu>

For additional information please contact:

Carla Capizzi, Senior Public Relations Specialist, Telephone 973 353 x17, Email capizzi@andromeda.rutgers.edu

Anonda Bell, Director & Curator, Paul Robeson Galleries, Telephone 973 353 1609, Email anonda@andromeda.rutgers.edu

The Paul Robeson Galleries' programs are supported, in part, by a grant from the New Jersey State Council on the Arts/Department of State, a Partner Agency of the National Endowment for the Arts, the Geraldine R. Dodge Foundation, and by private donations. We are also supported by the Robeson Campus Center, the Faculty of Arts & Sciences, and the Cultural Programming Committee, Rutgers-Newark.



SPRING EXHIBITIONS 2013



Jeanette May, "Bachelor #1 Matt," 2011, archival pigment print, 26"x38", courtesy of the artist

No Place Like Home

Main Gallery – January 22 – April 4, 2013

Reception Thursday, January 31, 2013 5pm-7pm

The home is not only where the heart is, but also a site for politics and the imagination. While the news floods with coverage of foreclosures, vacancies, homelessness, and property values, entertainment media celebrates real estate shenanigans and home renovations. This exhibition includes work of contemporary artists grappling with the physical and psychological implications of "home."

Artists in this exhibition: Corinne May Botz, Marisa DiPaola, Kate Gilmore, Thomas Green, Mikhail Gubin, Louise Halsey, Sarah Hoskins, Aron G. Johnston, Jr., Stephen Lorber, George Lorio, Jeanette May, Caitlin Parker, Martha Rosler, David H. Wells

Paul Robeson Galleries

MEDIA RELEASE

S A T E L L I T E E X H I B I T I O N S

Marc D'Agusto: Forgotten Place

Orbit 1 Gallery

January 22 - July 24, 2013

Reception Thursday, January 31, 2013 5pm-7pm

Marc D'Agusto's multilayered work delves into ideas of transformation, renewal, and the passing of time. Using rust, cracks, and fissures in the surface of his work, D'Agusto draws attention to the past while utilizing images of the human body, architectural forms, and space to suggest rebirth and regeneration. He writes, "Like a molting cicada shedding its past life, my work explores traces of history and alludes to new beginnings."

Marc D'Agusto is an artist and educator whose works have been exhibited extensively in New Jersey, including solo exhibitions in Montclair, Watchung, and Newark. He is founder and executive director of Gravity Inc, an arts initiative seeking to increase collaboration among artists and accessibility to the arts. D'Agusto is currently Adjunct Professor of Fine Arts at Nyack College in New York City.

http://andromeda.rutgers.edu/artgallery/orbit_1/index.html

Primary Essence: Ben Georgia

Orbit 2 Gallery

January 22 – June 4, 2013

Reception Thursday, January 31, 2013 5pm-7pm

For painter Ben Georgia, abstraction offers the possibility of a fresh mode of communication. Georgia seeks a language that surpasses representation and the fleeting concerns of the moment, reaching towards expressing the emotional depths of human experience. Georgia writes, "I work to create something on the canvas which is not of this concrete, external world, and imaginary vision which I see from the start on the blank, white canvas and where the beauty and strength of the painting compensate for and counteract the tragedy and decay of life."

Ben Georgia is a New Jersey native who attended Rutgers Newark in the 1960s. His work has been exhibited in dozens of exhibitions in the nearly thirty years of his professional artistic practice, and can be found in many public and private collections throughout the United States, Europe, and Hong Kong.

http://andromeda.rutgers.edu/artgallery/orbit_2/index.html

Authors & Artists: Portraits by Bonnie Gloris

Pequod Deck Gallery

January 22 – July 24, 2013

Reception Thursday, January 31, 2013 5pm-7pm

"Authors & Artists" is an ongoing series of portraits in which Bonnie Gloris mixes realistic portraiture with more ambiguous elements to delve into the personalities of her subjects, inviting viewers to form their own conclusions and decipher the works line by line. The portraits are small in scale and as intimate as family photographs, their kitschy frames interacting with their subjects' elevated fame and stature.

Bonnie Gloris is a visual artist and independent curator who has shown her work in dozens of exhibitions across the United States. She is currently on the staff of Arts Guild New Jersey.

http://andromeda.rutgers.edu/artgallery/pequod_deck/index.html

Paul Robeson Galleries

MEDIA RELEASE

Janice McDonnell: The Death Penalty Ladies Society

Criminal Justice Gallery
Center for Law and Justice, 5th floor, 123 Washington Street, Newark NJ
January 22 – July 24, 2013

Janice McDonnell writes: "Since the death penalty was reinstated in this country in 1976 twelve women have been executed... Drawing from John Singer Sargent's portraiture for inspiration, I've recast these women in the role of socialites; portraying them in a new, genteel light, elevating their status in our society, and confronting the treatment of the privileged in today's world. Their crimes were heinous, and their victims were real. And while not condoning their acts of violence, I question our double standards on how we as society judge its members."

Janice McDonnell is a Brooklyn-based artist who studied at the Art Students League and Ohio State University. Her works have shown extensively in New York City since 2002.

<http://andromeda.rutgers.edu/artgallery/current/index.html>

Soma, Trickster & Myself: David D. Oquendo

Messier Gallery
Robeson Campus Center, 3rd Floor
September 4, 2012 – July 24, 2013

David D. Oquendo leads his audience into a world populated with characters of indefinite human-animal-plant-fungus origin, each signifying a facet of Oquendo's exploration of religion, culture, and personal growth. The work rings with pop culture and commercial imagery, yet engages questions that have remained relevant throughout human history.

<http://andromeda.rutgers.edu/artgallery/current/index.html>

The Nova Gallery

The Nova Gallery features a display of works by participants in Paul Robeson Galleries' outreach and education programs.

Images are available for media use; please contact Caren King Choi, Gallery Manager & Education Coordinator,
Telephone 973 353 1625, Email ckarking@andromeda.rutgers.edu

ALL PAUL ROBESON GALLERIES EXHIBITIONS ARE FREE AND OPEN TO THE PUBLIC

Gallery Website <http://andromeda.rutgers.edu/artgallery/>

For additional information please contact:

Carla Capizzi, Senior Public Relations Specialist, Telephone 973 353 x17, Email capizzi@andromeda.rutgers.edu

Anonda Bell, Director & Curator, Paul Robeson Galleries, Telephone 973 353 1609, Email anonda@andromeda.rutgers.edu

The Paul Robeson Galleries' programs are supported, in part, by a grant from the New Jersey State Council on the Arts/Department of State, a Partner Agency of the National Endowment for the Arts, the Geraldine R. Dodge Foundation, and by private donations.

We are also supported by the Robeson Campus Center, the Office of the Chancellor and the Cultural Programming Committee, Rutgers-Newark.



FALL EXHIBITIONS 2014



Raúl Villarreal, *La crisis de la abundancia (The Abundance Crisis)*, 2012, oil on linen, 48"x60", Courtesy of the artist

From There to Here

Main Gallery – September 2 – December 24, 2014

Reception Thursday, September 11, 2014 5pm-7pm

Moving from a home country to another is an experience unlike any other. There are many reasons that people choose, or are forced, to undertake such an act. This exhibition will focus on the work of artists who explore all aspects of the migrant and immigrant experience.

Artists in this exhibition: Aileen Bassis, Sasha Bromberg, Maki Hajikano, Muriel Hasbun, Fidencio Martinez, Jenny Polak, Viviane Rombaldi Seppey, Leona Strassberg Steiner, Raúl Villarreal, and Mina Zarfsaz

Paul Robeson Galleries

MEDIA RELEASE

SATELLITE EXHIBITIONS



Planar Scheme: Kati Vilim

Orbit 1 Gallery

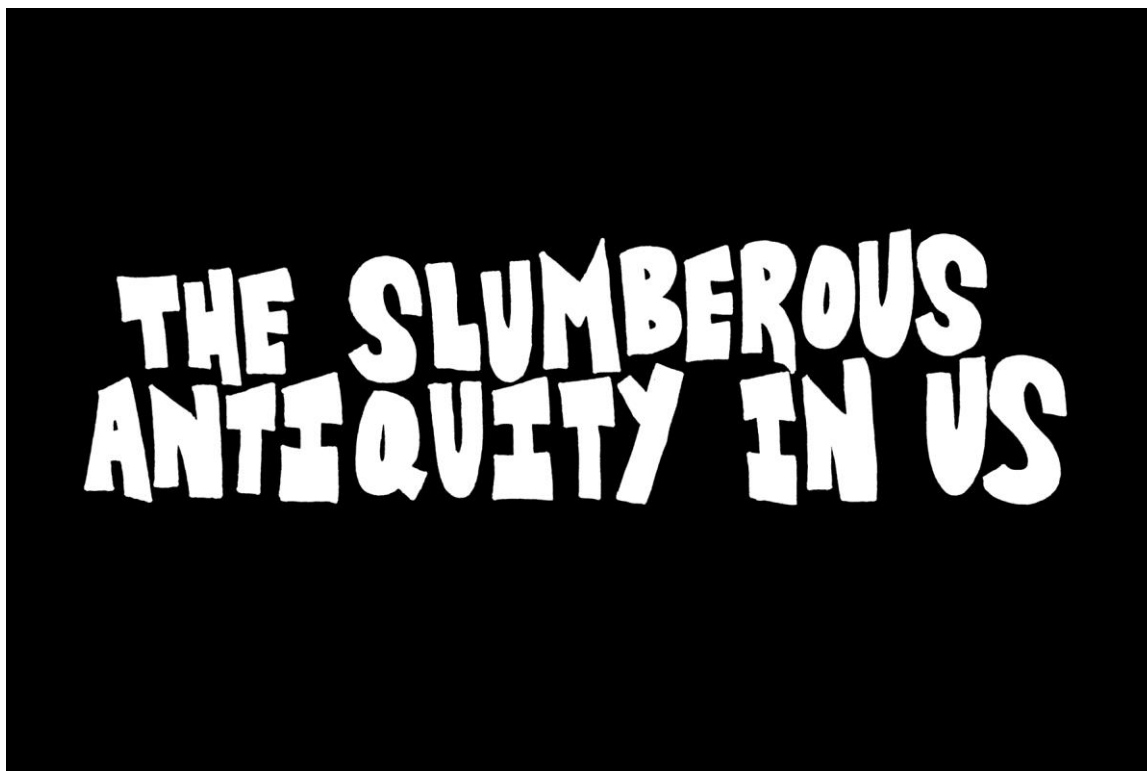
September 2 – December 24, 2014

Reception Thursday, September 11, 2014 5pm-7pm

Through her work, Kati Vilim deals with the classic issues of color, form and movement. She says, “I am composing the elements of structure, proportion, rhythm and color...reminding us of musical or architectural concepts where these different qualities are organized to a new form”. For this installation, Vilim has responded to the architectural specificities of the space, including the uniform grey cinder block construction of the University’s institutional modernist building. Her methodical approach is evidenced in the geometric forms where she has bypassed contemporary tricks to paint all her hard edged objects with an unwavering hand. Many experimental drawings are created by the artist as the work evolves. The outcome is an actual palimpsest of ideas, presented in a distilled form, with a synthesis of lines, color and form.

Born in Hungary, Kati Vilim undertook her formal art training in Europe and the United States. She has had solo exhibitions both in her home country and the US. She currently occupies a studio based in Newark and she received the Prize of the Association of the Hungarian Artists for her degree work at the University of Fine Arts, Budapest, Hungary.

<http://artgallery.newark.rutgers.edu/exhibitions/>

**Daniel Patrick Helmstetter: The Slumberous Antiquity in Us**

Orbit 2 Gallery

September 2 – December 24, 2014

Reception Thursday, September 11, 2014 5pm-7pm

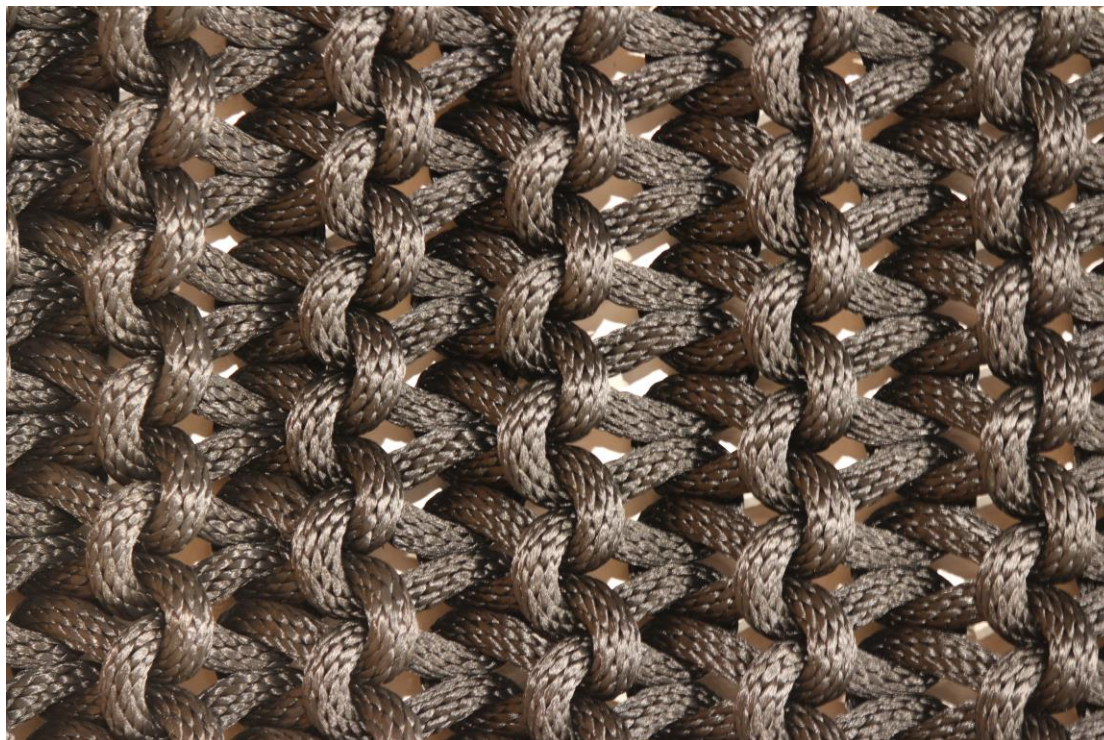
"The Slumberous Antiquity in Us" is a body of work exploring what is old inside. On a macro level, it ponders the absurdity of living in the year Two Thousand and Fourteen when humans have been on Earth for hundreds of thousands of years. What have we forgotten? What interests does it serve to fuel this disconnection? On a micro level, the series explores what it's like to work through old wounds that create patterns of subtle underlying influence on our behavior. What is it like to address our old inner junk?

Daniel Patrick Helmstetter is a poet with a paintbrush based in New Jersey. Rather than an image on a canvas, his work is a poetic spark of an excavated emotion, engaging the viewer and inviting them to paint the picture themselves. Daniel is the author of 'A Return To Mothers Love' and 'Bodies of Water'. His paintings have been featured in galleries, installations, magazines, and academic publications throughout The United States and Mexico. Recent publications include features in "Type Spaces" by Basheer Graphic Books (Singapore), and "Lettering Large" by Steven Heller and Mirko Illic on Rockport Press (NY).

<http://artgallery.newark.rutgers.edu/exhibitions/>

Paul Robeson Galleries

MEDIA RELEASE



Krissia Thaiane, *Rope Piece #1* detail, 2014, polyurethane rope, 36"x63", Courtesy of the artist. Photo by Omar Saad.

Sojourn: Linda Hu & Krissia Thaiane

U-Gallery

September 2, 2014 – May 2015

Reception Thursday, September 11, 2014 5pm-7pm

Though vastly different in style and medium, both Linda Hu and Krissia Thaiane's practices are marked by a meditative, progressive building-out from simplicity to complexity. These emerging artists are recent graduates from Rutgers University-Newark's Department of Arts, Culture and Media. The bulk of Linda Hu's work consists of traditional pen and ink on paper. The black and white drawings expose a practice that is obsessive and precise, with complex detail rippling outward from a foundational framework. The long periods of strenuous and meditative concentration, she writes, "provide the time and quiet for me to construct connections with people, ideas, environments." Krissia Thaiane writes, "My work explores the strength and frailty of the fabric of family and tradition through knitted industrial materials." Each individual knot is magnified by the ponderousness of the materials and multiplied by the outsized act of knitting, drawing attention to the relationship between part and whole.

<http://artgallery.newark.rutgers.edu/exhibitions/>

Paul Robeson Galleries

MEDIA RELEASE



Making Meaningful Partnerships Through Service: Rutgers Newark Students in Tanzania

Pequod Deck Gallery

September 2 – October 23, 2014

Reception Thursday, September 11, 2014 5pm-7pm

An exhibition of photographs capturing the journey of eight Rutgers Newark students participating in the 4th Annual International Service Learning and Leadership Exchange to Tanzania

<http://artgallery.newark.rutgers.edu/exhibitions/>

Sowing the Seeds for Future Success: Rutgers Newark Students in India

Pequod Deck Gallery

October 30 – December 24, 2014

An exhibition of pictures showcasing the transformative experience of Rutgers Newark students on their quest to create global impact in India.

<http://artgallery.newark.rutgers.edu/exhibitions/>

Paul Robeson Galleries

MEDIA RELEASE



Steven J. Riskand, *Tools of the Trade*, 2012, digital chromogenic print, 20"x24", Courtesy of the artist.
© 2012 Steven J. Riskind

Cooking For Change

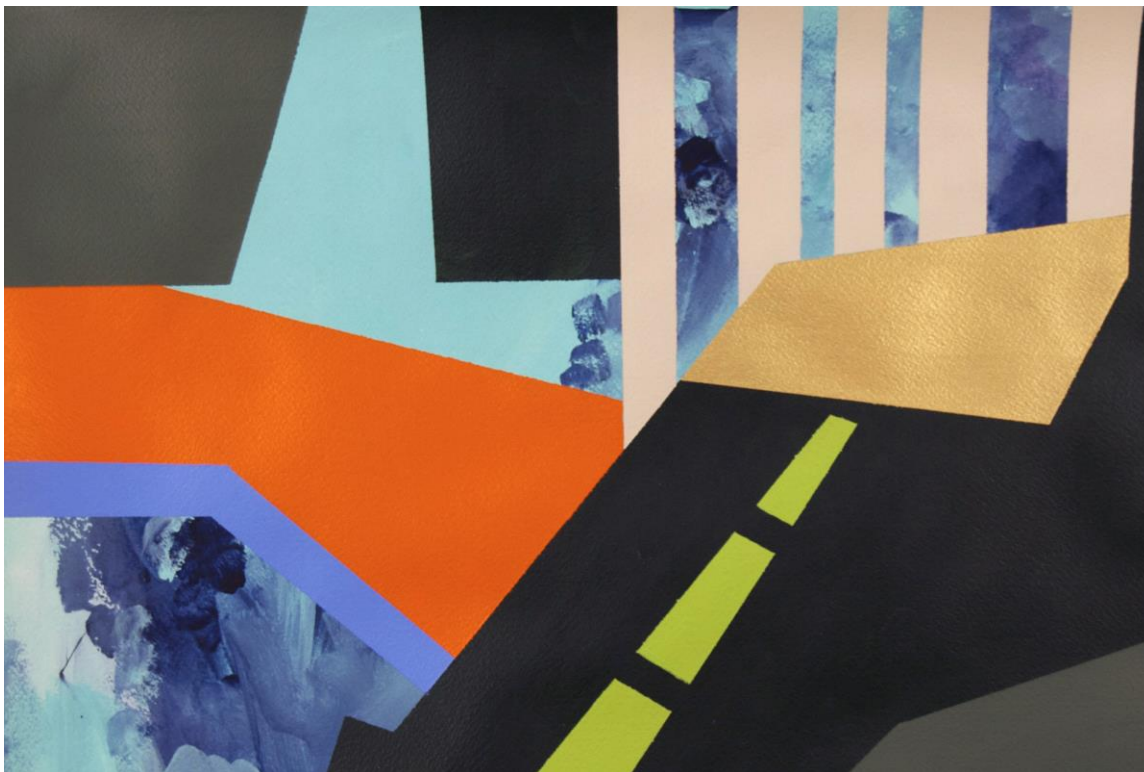
Criminal Justice Gallery
Center for Law and Justice, 5th floor, 123 Washington Street, Newark NJ
September 2 – December 24, 2014

A collaborative exhibition with photographer Steve Riskand and writer Doris Friedensohn, whose book *Cooking for Change* (Full Court Press, 2011) documents the work of the Community FoodBank of New Jersey and the Food Service Training Academy. The FSTA's intensive sixteen-week education in culinary arts and food safety provides individuals with life skills, job readiness training, and job placement assistance. It has been a powerful source of hope and help for hundreds of underprivileged people in the Newark area.

<http://artgallery.newark.rutgers.edu/exhibitions/>

Paul Robeson Galleries

MEDIA RELEASE



Under/Over: Dahlia Elsayed

Messier Gallery

Robeson Campus Center, 3rd Floor

September 2, 2014 – July 30, 2015

Reception Thursday, September 11, 2014 5pm-7pm

A mural installation by artist Dahlia Elsayed, who writes, “For over a decade, I have been making text and image based work that synthesizes an internal and external experience of place, connecting the ephemeral to the concrete. Visually, the work pulls from conceptual art, comics, cartography and landscape painting.” Elsayed’s paintings and installations have been exhibited in group and solo shows in the United States, Poland, the Netherlands, South Korea, Sweden, Italy, Armenia, and Egypt. Her work can be found in the collections of The Newark Museum, the US Department of State—Art in Embassies, Johnson & Johnson Corporation, The Jersey City Museum, Hunterdon Museum of Art, Noyes Museum of Art, Ritz Carlton Hotel NYC, and many more. Elsayed is currently an assistant professor of fine arts at CUNY LaGuardia Community College.

<http://artgallery.newark.rutgers.edu/exhibitions/>



Paul Robeson Galleries

MEDIA RELEASE

The Nova Gallery

The Nova Gallery features a display of works by participants in Paul Robeson Galleries' outreach and education programs.

Images are available for media use; please contact Caren King Choi, Gallery Manager & Education Coordinator,
Telephone 973 353 1625, Email carking@rutgers.edu

ALL PAUL ROBESON GALLERIES EXHIBITIONS ARE FREE AND OPEN TO THE PUBLIC

Gallery Website <http://artgallery.newark.rutgers.edu/>

For additional information please contact:

Carla Capizzi, Senior Public Relations Specialist, Telephone 973 353 x17, Email capizzi@andromeda.rutgers.edu

Anonda Bell, Director & Curator, Paul Robeson Galleries, Telephone 973 353 1609, Email anonda@andromeda.rutgers.edu

The Paul Robeson Galleries' programs are supported, in part, by a grant from the New Jersey State Council on the Arts/Department of State, a Partner Agency of the National Endowment for the Arts, the Geraldine R. Dodge Foundation, and by private donations. We are also supported by the Robeson Campus Center, the Faculty of Arts & Sciences, and the Cultural Programming Committee, Rutgers-Newark.



SPRING EXHIBITIONS 2014



Dahlia Elsayed, *The Sticky Parts*, 2011, acrylic on paper, 60"x155," Courtesy of the artist

Datascapes

Main Gallery – January 21 – April 2, 2014

Reception Thursday, January 30, 2014 5pm-7pm

The need to convey data, statistics, and territory in a creative manner is a challenge embraced by artists who have used data abstractions—including maps, charts, and diagrams—as the basis for their work. Artists in this exhibition explore how visual representation of information can manifest not only the literal and calculable, but also the intangible, inestimable, and subjective.

Artists in this exhibition: Manuel Acevedo, Alice Attie, Rob Carter, Dahlia Elsayed, Nick Lamia, Mark Lombardi, Loren Munk, John Jerome O'Connor, Nell Painter, Joseph Gerard Sabatino, and Fred Wilson

Paul Robeson Galleries

MEDIA RELEASE

S A T E L L I T E E X H I B I T I O N S

One Stitcher's Stories: Commemorative Quilts by Gail Mitchell

Orbit 1 Gallery

January 21 - July 30, 2014

Reception Thursday, January 30, 2014 5pm-7pm

Gail Mitchell began making quilts for her children from articles of cast off clothing. She soon began to incorporate photo transfers into her quilts, documenting historical events and honoring the accomplishments of African American artists, authors, poets, academics, and politicians. She writes, "Americans need to remember and to be reminded that African American history is American history."

Mitchell's work has been exhibited at institutions of higher education across New Jersey and at the Newark Museum. Mitchell is a retired educator and teacher of English as a second language.

<http://artgallery.newark.rutgers.edu/exhibitions/>

Salubrious Justice

Orbit 2 Gallery

January 21 – July 30, 2014

Reception Thursday, January 30, 2014 5pm-7pm

An exhibition of work by New Jersey artists Eleta Caldwell, Gladys Grauer, Vivian McDuffie, Bisa Washington, Florence Weisz, and Adrienne Wheeler. This group show is presented in conjunction with Women in Media-Newark's 5th Annual Women's History Month Film Festival, which will take place from March 6-8, 2014, at the Robeson Campus Center.

Women in Media-Newark is an organization that advocates for and educates the public about issues affecting the lives of women using film, video and new media as its platform. Merging culture and academia, it rallies behind the brave women who courageously struggle to assume leadership roles in the film industry with a conscious effort to present a balanced image of women, dispelling stereotypes, and changing public perception of their sisters worldwide.

<http://artgallery.newark.rutgers.edu/exhibitions/>

Our Common Cause: Rutgers Newark Students Engaging Women's Health in Nicaragua

Pequod Deck Gallery

January 30 – July 30, 2014

Reception Thursday, January 30, 2014 5pm-7pm

In Nicaragua, one of Central America's poorest nations, preventable maternal mortality and childbirth complications plague the nation. The photographs exhibited here show the efforts of Rutgers-Newark students to improve those conditions. Through the six-day International Service Learning and Leadership Exchange to the capital city of Managua, Rutgers leaders immersed themselves in Nicaraguan culture, engaged in critical dialogues on community health and gender, and helped to forever change the face of international women's health advocacy and service.

<http://artgallery.newark.rutgers.edu/exhibitions/>

Paul Robeson Galleries

MEDIA RELEASE

Inside-Out: Perspectives on Social Justice by Carol Shapiro

Criminal Justice Gallery

Center for Law and Justice, 5th floor, 123 Washington Street, Newark NJ

September 3, 2013 – July 30, 2014

"I am questioning what is justice. The need for innovation and risk in reform efforts and the impact of our prison industrial complex on poor families must be seriously considered. Too often, we overlook the imperative to incorporate creative methods to stimulate social justice reform. Family is used as a metaphor in my imagery encouraging the observer to engage in discourse and challenge assumptions. The title 'Inside-Out' refers to both the prisoner and the impact on the family dynamic."

Carol Shapiro visited her first prison at the age of 16, and has since been a powerful force in pushing justice reform. She studied art and criminology at Carnegie Mellon University and founded a not-for-profit organization called Family Justice. Family Justice uses the visual and performing arts to raise awareness and organize interventions that engage social networks and staff of correctional facilities. Shapiro's life has seen an inextricable twining of her passions for art and reform.

<http://artgallery.newark.rutgers.edu/exhibitions/>

Cake Soap Panorama: Kevin Darmanie

Messier Gallery

Robeson Campus Center, 3rd Floor

September 2013 – July 30, 2014

Kevin Darmanie writes, "The mural is an amalgamation of images drawn together to elicit the conflict and sense of possibility spawned from a blending of two identities: the distant aggressiveness of the Caribbean and the liberal individualism of the American. I employ motifs from my current body of work: a manual construction, a popular phrase, the artist as hero and a map of Trinidad reconfigured to express American sentiments. The work is a spying glass for freedom; the viewer perceives a freedom seemingly apparent in each identity from the confines of the latter identity. The piece also asks, how much of each identity and its social values are lost in exchange for immigrant self actualization?"

After receiving his education in Trinidad & Tobago, Darmanie came to Newark and has since exhibited in a number of venues including Lex Leonard Gallery, Rupert Ravens Contemporary, Gallery Aferro, and the Paul Robeson Galleries. He is a largely self-taught artist with some formal training, whose work is comprised of comic books, works on paper, paintings, murals, and installations. His work melds such seemingly disparate elements as critical art theory and the techniques of fine art with comic illustration.

<http://artgallery.newark.rutgers.edu/exhibitions/>

The Nova Gallery

The Nova Gallery features a display of works by participants in Paul Robeson Galleries' outreach and education programs.



Paul Robeson Galleries

MEDIA RELEASE

Images are available for media use; please contact Caren King Choi, Gallery Manager & Education Coordinator,
Telephone 973 353 1625, Email ckking@andromeda.rutgers.edu

ALL PAUL ROBESON GALLERIES EXHIBITIONS ARE FREE AND OPEN TO THE PUBLIC

Gallery Website <http://artgallery.newark.rutgers.edu/>

For additional information please contact:

Carla Capizzi, Senior Public Relations Specialist, Telephone 973 353 x17, Email capizzi@andromeda.rutgers.edu

Anonda Bell, Director & Curator, Paul Robeson Galleries, Telephone 973 353 1609, Email anonda@andromeda.rutgers.edu

The Paul Robeson Galleries' programs are supported, in part, by a grant from the New Jersey State Council on the Arts/Department of State, a Partner Agency of the National Endowment for the Arts, the Geraldine R. Dodge Foundation, and by private donations. We are also supported by the Robeson Campus Center, the Faculty of Arts & Sciences, and the Cultural Programming Committee, Rutgers-Newark.



Paul Robeson Galleries

MEDIA RELEASE

SUMMER EXHIBITION 2014

In-Site: The Creative Process in Plain View

Main Gallery – May 22 – July 24, 2014

Reception Thursday, May 22, 2014 5pm-7pm

“For a century or more, the artist’s studio has enjoyed a kind of legendary status in the public imagination: here is the place in which artwork is made, the crucible of the creative process.”

This quote by writer, art historian, and critic Benjamin Genocchio is one of the first things that the visitor encounters upon entering the exhibition “In-Site: The Creative Process in Plain View,” at the Paul Robeson Galleries’ Main Gallery. What grabs the visitor’s attention, however, is more likely to be the colorful arrangement of fabric and paper directly opposite the hand-written quote; a display by painter and textile artist Diane June, the assortment of sketches and materials cascades onto the floor. How inspiration and process figure in the creation of artworks can cover the full spectrum from mundane to mystical, and this exhibition is intended to provide insight into the ways in which contemporary artists traverse the distance between an idea and its realization. Aside from the Genocchio quote and two others by Twyla Tharp and Joan Miró, very little by way of text accompanies the show. The gallery is divided into twenty-two zones. Each artist has been given a zone and free rein to display and arrange objects, equipment, materials, and images that offer a glimpse into his or her creative practice.

The kinds of displays can be loosely separated into four types: allegorical representations of the artist’s self, studio excerpts, stockpiles of collected materials, and curated objects. The presence of the artist is strong in Evonne Davis’ display, which includes two of her personal accessories, a soft messenger-boy cap and knit tie, and also in Kevin Blythe Sampson’s display, whose shrine-like arrangement incorporates a photograph of the artist’s father leading a demonstration in 1964. Many artists present actual equipment and materials important to their work. Dahlia Elsayed features a work table still bearing residues of past projects on its surface. Joseph Gerard Sabatino presents a meat grinder, and Gladys Barker Grauer an old-fashioned loom. For artists like Babs Reingold and Adrienne Wheeler, using non-traditional materials requires that a significant portion of time be spent in the tasks of amassing, preparing, and sorting, and so their areas include samples of human hair and plant matter, respectively. Some artists carefully choose and present finished or near-finished work: Manuel Acevedo’s collection of small sculptures on a custom-painted plinth, So Yoon Lym’s images and books immaculately arranged behind Plexiglas, and Jerry Gant’s lively handmade dolls positioned like performers on a many-tiered stage.

Ultimately, however, “In-Site” eludes tidy summation. No two artists create in exactly the same manner, and each is informed by his or her individual thought processes, intentions, perspectives, experiences, and interactions with materials. Sketches, research, and experiments can be seen throughout, as can polished works, diorama-like displays, and piles of what, at first glance, may seem like trash. Like all exhibitions, “In-Site” is not just about artwork but also about choice—in this case, the artist’s choice moreso than the

Paul Robeson Galleries

MEDIA RELEASE

curator's. Given the opportunity to signify his or her own artistic practice, what does the artist choose to show? The result is like a series of abstract self-portraits: at turns mysterious, surprising, and weighty, but above all a compelling examination of not only the ways in which we create, but also the ways in which we self-identify.

Artists in this exhibition: Manuel Acevedo, Terry Boddie, Nancy Cohen, Kevin Darmanie, Evonne Davis, Dahlia Elsayed, Jerry Gant, Matt Gosser, Gladys Barker Grauer, Diane June, Jessica Lagunas, So Yoon Lym, Gail Mitchell, David D. Oquendo, Roberto Osti, Nell Painter/Meena Alexander, German Pitre, Babs Reingold, Joseph Gerard Sabatino, Kevin Blythe Sampson, Adrienne Wheeler, and Beth Whitney.

Images are available for media use; please contact Caren King Choi, Gallery Manager & Education Coordinator,
Telephone 973 353 1625, Email carking@andromeda.rutgers.edu

ALL PAUL ROBESON GALLERIES EXHIBITIONS ARE FREE AND OPEN TO THE PUBLIC

Gallery Website <http://artgallery.newark.rutgers.edu/>

For additional information please contact:

Carla Capizzi, Senior Public Relations Specialist, Telephone 973 353 x17, Email capizzi@andromeda.rutgers.edu

Anonda Bell, Director & Curator, Paul Robeson Galleries, Telephone 973 353 1609, Email anonda@andromeda.rutgers.edu

The Paul Robeson Galleries' programs are supported, in part, by a grant from the New Jersey State Council on the Arts/Department of State, a Partner Agency of the National Endowment for the Arts, the Geraldine R. Dodge Foundation, and by private donations. We are also supported by the Robeson Campus Center, the Faculty of Arts & Sciences, and the Cultural Programming Committee, Rutgers-Newark.



FALL EXHIBITIONS 2015



Jim Jacobs, *Splice* from the series *Graft*, 2013, mulberry and maple, 30"x44"x7", courtesy of the artist

The (Not So) Secret Life of Plants

Main Gallery – September 1 – December 17, 2015

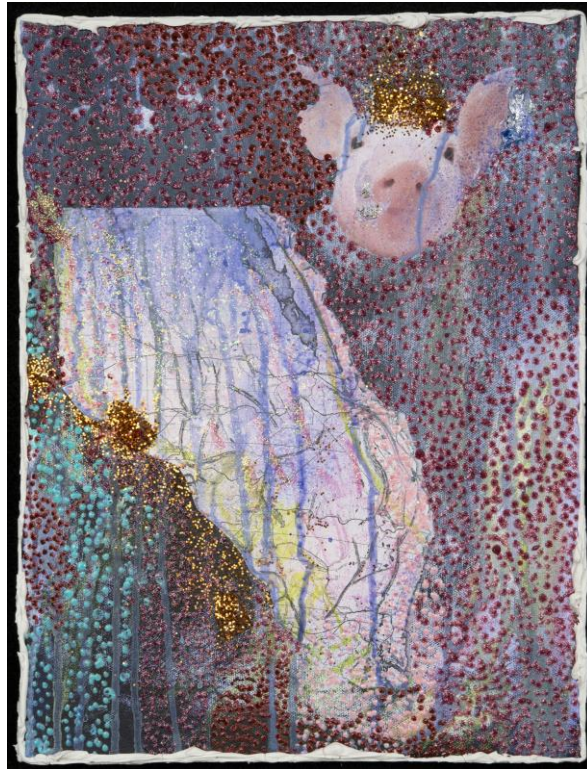
Reception Thursday, September 10, 2015 5pm-7pm

Plants are the foundation on which most visible life on the planet exists. They are under stress, with diminishing natural environments and the very real possibility that many plants may become extinct even before humans are aware of their existence. This exhibition explores the nature of plants and how humans interact with them, from the forest to the home.

Artists in this exhibition: Thea Clark, John Edmark, Dana Fritz, Jim Jacobs, Ming-Jer Kuo, Jessica Lagunas, Sam Metcalf, Lina Puerta, Lindsay M. Robbins, Linda Stillman, Adam Swart, Yeon Ji Yoo, Rachel Yurkovich

<http://artgallery.newark.rutgers.edu/exhibitions/the-not-so-secret-life-of-plants/>

SATELLITE EXHIBITIONS



Maria Lupo, *Pig Migration 1*, 2014, mixed media on canvas, 16"x12", courtesy of the artist

Pig Wars & Migration: Maria Lupo

Orbit 1 Gallery

September 1 – December 24, 2015

Reception Thursday, September 10, 2015 5pm-7pm

Maria Lupo's work explores the personal, societal, and environmental impacts of war and migration. Both are driven by basic needs such as food, safety, and freedom, but can lead to tense societies where equality and peace seem hopeless. Lupo writes, "We are a global, world network and we are all held prisoner by the terror of war and its slaughter of the human spirit." Lupo's use of pigs in her work references both human actions and reactions, as the pig (a source of food) circles the globe, seeking food and safety of its own while being hunted by predators. The appearance of battle maps of the American Civil War (considered one of the bloodiest in history) comments on the war's polarizing effect on a nation already divided.

Nationally recognized artist Maria Lupo received her BFA from Rutgers University – Newark, her MFA from Hunter College, and her Post-Masters Specialization in Art Therapy from Caldwell College. Lupo is a Registered Art Therapist and holds a second Masters in Counseling Psychology. Her work is included in many public and private collections.

<http://artgallery.newark.rutgers.edu/exhibitions/pig-wars-migration-maria-lupo/>



James Wilson, 1.11.2014, 2014, pencil on paper, 8 ½"x11", courtesy of the artist

Subway Series 2012 – Present: James Wilson

Orbit 2 Gallery

September 1 – December 24, 2015

Reception Thursday, September 10, 2015 5pm-7pm

James Wilson's ongoing "Subway Series" is composed of the artist's observational drawings from life on Path and subway trains in and around Newark. In rapid lines, Wilson captures moments of privacy and solitude in public places.

James Steven Wilson is a born-and-raised Newark artist, a graduate of the city's famed Arts High, and a fixture of the Newark skateboard and graffiti scenes. Wilson writes, "Through my art I hope to tell stories of whimsical irony, pensive despair, and playful joy. One theme present throughout my work is that of the dispossessed youth." In addition to his art practice, which includes murals, drawings, paintings, and 3 dimensional works, Wilson is an art handler, artist educator, and mentor for local youth.

<http://artgallery.newark.rutgers.edu/exhibitions/subway-series-2012-present-james-wilson/>



Sarah Lamont, Study 2, 2015, acrylic paint, wood primer on canvas, 20"x16", courtesy of the artist

Bloom: Patricia Arias-Reynolds & Sarah Lamont

U-Gallery

September 1, 2015 – May 2016

Reception Thursday, September 10, 2015 5pm-7pm

The works in this exhibition celebrate and meditate on the burgeoning energies found in nature—visible and invisible, implied through interactions of color and gesture. Both artists, Patricia Arias-Reynolds and Sarah Lamont, are recent graduates from Rutgers University-Newark's Department of Arts, Culture & Media.

Sarah Lamont's process is one of exploration, chance, and control. Lamont drips, splatters, and pours her materials onto saturated canvases to arrive at color interactions reminiscent of those created by foam bath bombs on the surface of water. Lamont writes, "*Nature now affects the final outcome of the work, which is not determined until completely dry. Now all is chance.*"

Patricia Arias-Reynolds' work uses trees as a starting point to explore spirituality, nature, energy, and healing. Beginning with photographs taken during her travels, Arias-Reynolds manipulates the images digitally and with paint in vivid, contrasting colors. She writes, "*The works attempt to manifest an internal energy that evokes a memory from my experience within nature.*"

<http://artgallery.newark.rutgers.edu/exhibitions/bloom-patricia-arias-reynolds-sarah-lamont/>

Paul Robeson Galleries

MEDIA RELEASE



Exploring Global Leadership in Tanzania

Pequod Deck Gallery

September 1 – October 22, 2015

Reception Thursday, September 10, 2015 5pm-7pm

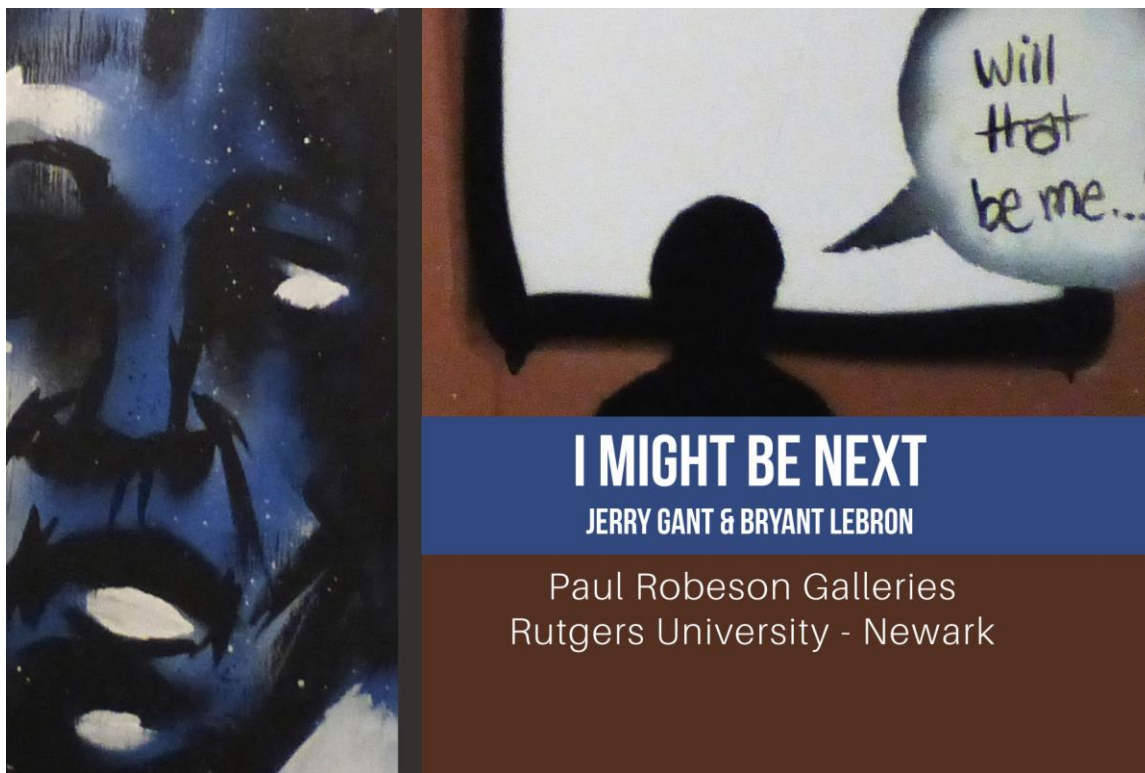
For the past five years, the Paul Robeson Campus Center has been committed to designing student development programming that challenges participants as they move through critical stages of identity development. Through a series of intentional service learning initiatives, we offer our students an opportunity to serve as global citizens and active social change agents.

This exhibition features photographs from the Robeson International Leadership Exchange. This ten-day initiative based in Tanzania and Zanzibar, encourages students to engage models of leadership through a global lens. This partnership with Zanzibar University and our non-profit allies, prepares and challenges Rutgers students to cross boundaries of difference, gain cultural competency, and further their professional development.

<http://artgallery.newark.rutgers.edu/exhibitions/exploring-global-leadership-in-tanzania/>

Paul Robeson Galleries

MEDIA RELEASE



I Might Be Next: Jerry Gant & Bryant Lebron

Criminal Justice Gallery

Center for Law and Justice, 5th floor, 123 Washington Street, Newark NJ

September 1, 2015 – March 29, 2016

In the midst of recent headlines about unarmed Black individuals killed by white police officers, Newark artists Jerry Gant and Bryant Lebron are investigating the Black experience with criminal justice in modern America.

Historian and artist Nell Painter writes:

"Solidarity has been our talisman, our key to sanity within an insane system of racial denigration... In these times, the weekly drumbeat of murder turns solidarity into an endlessly renewed grief, as a person is killed as each week goes by. We may be personally safe. But our solidarity connects us, week by week, to each murdered black person. 'That could have been me,' we feel, we say, each time another loses her or his life senselessly."

<http://artgallery.newark.rutgers.edu/exhibitions/i-might-be-next-jerry-gant-bryant-lebron/>



Armisey Smith, *Rudiments*, 2011, acrylic on paper and canvas, 30"x48", courtesy of the artist

One Worm at a Time: Armisey Smith

Messier Gallery

Robeson Campus Center, 3rd Floor

September 1, 2015 – July 28, 2016

This series of murals tells the story of a person of color navigating mental illness, working through the stigma and taking the journey through this disability to find balance, peace, and resilience. Armisey Smith is a Newark-based illustrator, graphic designer, curator, and painter.

<http://artgallery.newark.rutgers.edu/exhibitions/one-worm-at-a-time-armisey-smith/>

Paul Robeson Galleries

MEDIA RELEASE

Images are available for media use; please contact Caren King Choi, Gallery Manager & Education Coordinator,
Telephone 973 353 1625, Email carking@rutgers.edu

ALL PAUL ROBESON GALLERIES EXHIBITIONS ARE FREE AND OPEN TO THE PUBLIC

Gallery Website <http://artgallery.newark.rutgers.edu/>

For additional information please contact:

Carla Capizzi, Senior Public Relations Specialist, Telephone 973 353 x17, Email capizzi@andromeda.rutgers.edu

Anonda Bell, Director & Curator, Paul Robeson Galleries, Telephone 973 353 1609, Email anonda@andromeda.rutgers.edu

The Paul Robeson Galleries' programs are supported, in part, by a grant from the New Jersey State Council on the Arts/Department of State, a Partner Agency of the National Endowment for the Arts, the Geraldine R. Dodge Foundation, and by private donations. We are also supported by the Robeson Campus Center, the Faculty of Arts & Sciences, and the Cultural Programming Committee,

Rutgers University-Newark.



SPRING EXHIBITIONS 2015



Allison Cekala, *Untitled No. 3*, Boston, MA, 2013, archival inkjet print, 19 ½"x29", courtesy of the artist

Empire of Dirt

Main Gallery – January 20 – April 1, 2015

Reception Thursday, January 29, 2015 5pm-7pm

Dirt is a substance so common that it is known to all. It may be dust, soil, earth, clay, loam, grime, silt, filth, or mud. It is waste, excrement, rubbish, and bacteria. It is reviled and cherished, an enemy in the home or laboratory and a foundation for plant life and mighty buildings.

Artists in this exhibition: Kim Abeles, Allison Cekala, Wim Delvoye, Alisha McCurdy, Laura Moriarty, Nancy Ori, Alexandre Orion, Dorene M. Quinn, Raquel Rabinovich, and Shelby Shadwell.

<http://artgallery.newark.rutgers.edu/exhibitions/>

SATELLITE EXHIBITIONS



Trung Pham, *Crack i*, 2014, acrylic on paper, 5 ½"x7", courtesy of the artist

Healing Through Art: A Collaborative Exhibition

Orbit 1 Gallery

January 20 – July 30, 2015

Reception Thursday, January 29, 2015 5pm-7pm

This juried exhibition is a collaboration between the Healing Arts Program of Atlantic Health System and Paul Robeson Galleries of Rutgers University-Newark. To celebrate their shared vision for art and its engagement with the community, Healing Arts and Paul Robeson Galleries invited artists from the community and around the world to share their vision of the restorative effects of art. Many artists have experienced art-making as a healing tool to help them navigate through life's physical and emotional difficulties and to improve their spirit and well-being.

Artists in this exhibition: Mini Arora, Sandra Deanda, Jane Dell, Chloë Feldman Emison, Rida Fatima, Michael S. Fenton, Kate Matthiesen, Trung Pham, Kathleen Rebek, Karen Starrett, Ellen Waldstein, Florence Weisz, and Jave Yoshimoto.

<http://artgallery.newark.rutgers.edu/exhibitions/>



Rosalind Nzinga Nichol, *American Family Tree*, 2011, mixed media, handmade paper embedded with antique textiles, thread, acrylic, 33"x48", courtesy of the artist

Fertile Soil

Orbit 2 Gallery

January 20 – July 30, 2015

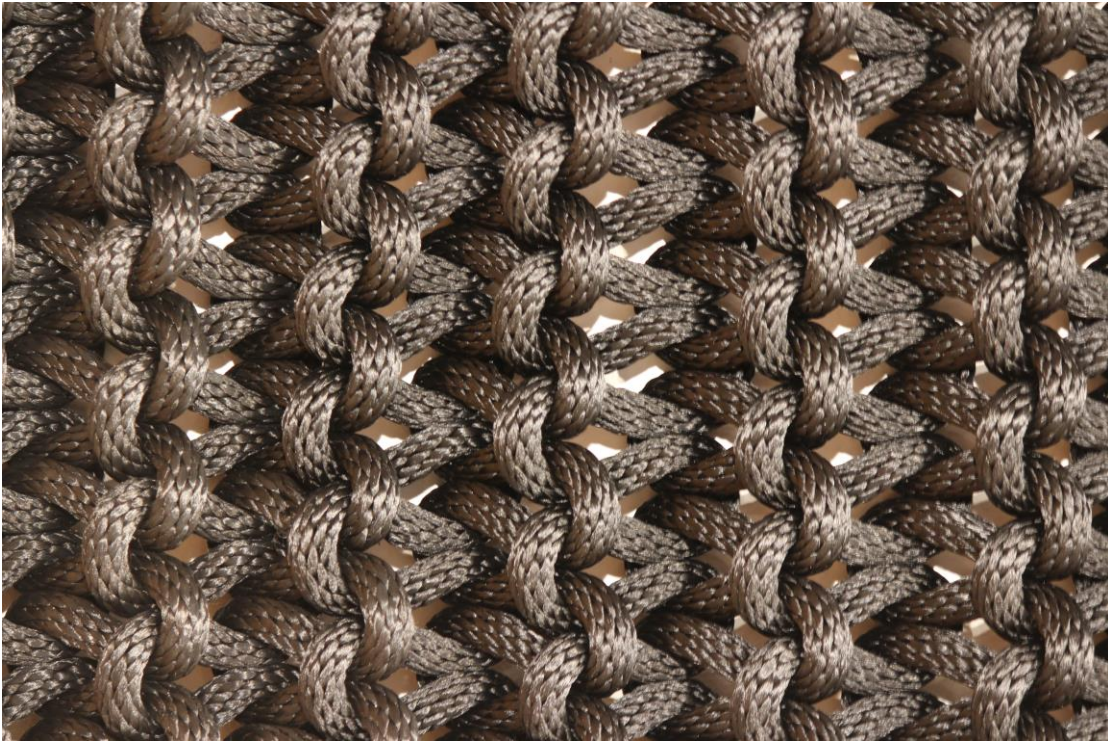
Reception Thursday, January 29, 2015 5pm-7pm

*You may write me down in history
With your bitter twisted lies,
You may trod me in the very dirt
But still, like dust, I'll rise.
Maya Angelou*

In 2014 the world lost two great female artists, Maya Angelou and Ruby Dee. Not only were they artists, but also political and social activists. This exhibition, curated by Gladys Grauer, coincides with the Women in Media Film Festival and features four female New Jersey artists.

Artists in this exhibition: Yvette Lucas, Rosalind Nzinga Nichol, Sarah Petruziello, Nette Forne Thomas

<http://artgallery.newark.rutgers.edu/exhibitions/>



Krissia Thaiane, *Rope Piece #1* detail, 2014, polyurethane rope, 36"x63", Courtesy of the artist. Photo by Omar Saad.

Sojourn: Linda Hu & Krissia Thaiane

U-Gallery

September 2, 2014 – May 2015

Though vastly different in style and medium, both Linda Hu and Krissia Thaiane's practices are marked by a meditative, progressive building-out from simplicity to complexity. These emerging artists are recent graduates from Rutgers University-Newark's Department of Arts, Culture and Media. The bulk of Linda Hu's work consists of traditional pen and ink on paper. The black and white drawings expose a practice that is obsessive and precise, with complex detail rippling outward from a foundational framework. The long periods of strenuous and meditative concentration, she writes, "provide the time and quiet for me to construct connections with people, ideas, environments." Krissia Thaiane writes, "My work explores the strength and frailty of the fabric of family and tradition through knitted industrial materials." Each individual knot is magnified by the ponderousness of the materials and multiplied by the outsized act of knitting, drawing attention to the relationship between part and whole.

<http://artgallery.newark.rutgers.edu/exhibitions/>



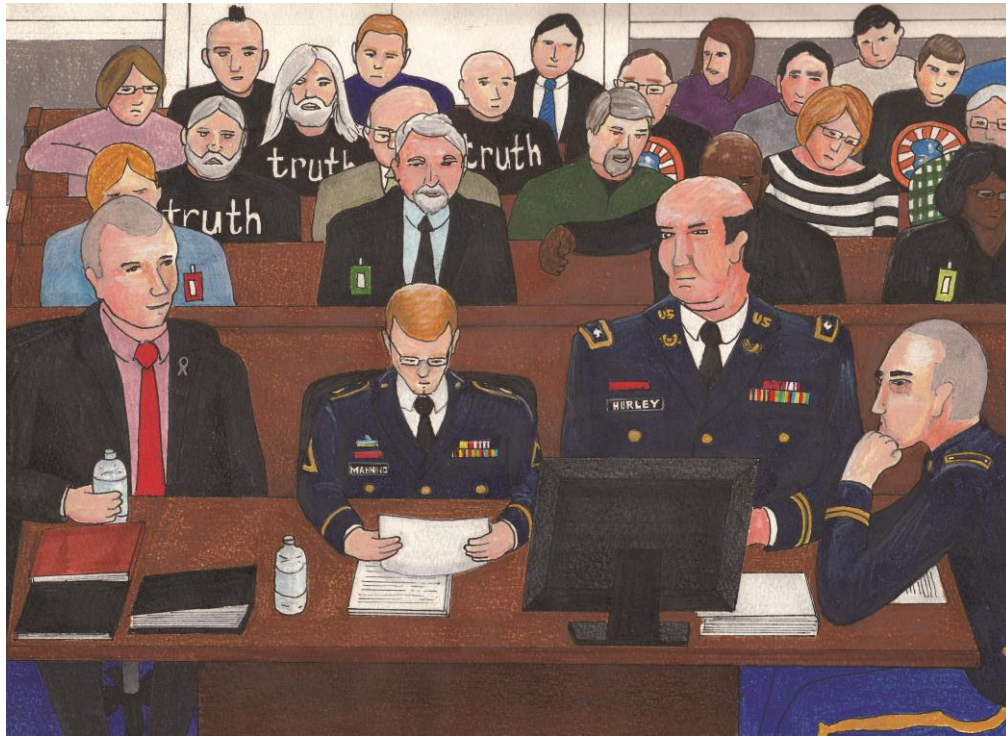
Our Common Cause

Rutgers University – Newark Students Engaging Women's Health in Nicaragua: Spring 2015

Pequod Deck Gallery
February 16 – July 30, 2015

An exhibition of photographs documenting a seven-day International Service Learning and Leadership Exchange, in which Rutgers University-Newark students worked to improve health conditions for mothers and children in Managua, Nicaragua

<http://artgallery.newark.rutgers.edu/exhibitions/>



Steven J. Riskind, *Tools of the Trade*, 2012, digital chromogenic print, 20"x24", Courtesy of the artist.
© 2012 Steven J. Riskind

Clark Stoeckley: The United States Versus Private Chelsea Manning

Criminal Justice Gallery
Center for Law and Justice, 5th floor, 123 Washington Street, Newark NJ
January 20 – July 30, 2015

Drawing and writing in real time from inside the courtroom, artist and WikiLeaks activist Clark Stoeckley here captures first-hand the extraordinary drama of *The United States vs. Private Chelsea Manning*, one of the most important and secretive trials in American history.

In the course of the trial, Private Manning insists that her release of the Iraq and Afghanistan war logs to WikiLeaks was an act of conscience, justified by the urgent need to reveal to the world the atrocities committed by the US military in the ostensible cause of freedom. At the prosecution table, military lawyers for the American government seek to set an example and discourage future whistleblowers by locking away Manning for decades, possibly the rest of her life.

Stoeckley's vivid sketches from inside the court and beyond, together with carefully selected transcripts of the proceedings, trace the arguments as they move back and forth between the defense and the prosecution. His rendering of the trial provides both a vital record and a uniquely compelling read.

<http://artgallery.newark.rutgers.edu/exhibitions/>



Dahlia Elsayed, *Under/Over* installation detail, 2014, acrylic, 119"x165", Courtesy of the artist

Under/Over: Dahlia Elsayed

Messier Gallery

Robeson Campus Center, 3rd Floor

September 2, 2014 – July 30, 2015

Reception Thursday, September 11, 2014 5pm-7pm

Dahlia Elsayed writes, "The murals are all based around the idea of celebrating the brutalist architecture of the Newark Campus. The much-maligned architectural style features strong geometric shapes, repetition of modular elements, and raw materials. I wanted to use the physical experience of walking around the campus and viewing the buildings from multiple points—from eye level, from above and from below. So the painted shapes that appear on the walls are directly linked to those research navigations and echo the shapes of the buildings—the side view of the concrete awning on Boyden Hall, the thin windows in between concrete slabs of the Dana Library, the overhang of the roof of Smith Hall, etc. There are also references to the natural elements (day sky/night sky) but these too are presented in hard-edged forms, echoing the architectural shapes. The three walls of the mural present three different readings of the sketches made during those walks. One is presented as a long panorama/scroll, another as a triptych, and the third as an unbound diagram. The title *Under/Over* relates to the different viewpoints when I was looking at the buildings and also to the formal elements and painting process of the murals."

<http://artgallery.newark.rutgers.edu/exhibitions/>

The Nova Gallery

The Nova Gallery features a display of works by participants in Paul Robeson Galleries' outreach and education programs.

Images are available for media use; please contact Caren King Choi, Gallery Manager & Education Coordinator,
Telephone 973 353 1625, Email carking@rutgers.edu

ALL PAUL ROBESON GALLERIES EXHIBITIONS ARE FREE AND OPEN TO THE PUBLIC

Gallery Website <http://artgallery.newark.rutgers.edu/>

For additional information please contact:

Carla Capizzi, Senior Public Relations Specialist, Telephone 973 353 x17, Email capizzi@andromeda.rutgers.edu

Anonda Bell, Director & Curator, Paul Robeson Galleries, Telephone 973 353 1609, Email anonda@andromeda.rutgers.edu

The Paul Robeson Galleries' programs are supported, in part, by a grant from the New Jersey State Council on the Arts/Department of State, a Partner Agency of the National Endowment for the Arts, the Geraldine R. Dodge Foundation, and by private donations. We are also supported by the Robeson Campus Center, the Faculty of Arts & Sciences, and the Cultural Programming Committee, Rutgers University-Newark.



FALL EXHIBITIONS 2016

31 Central

Main Gallery, Robeson Campus Center, 1st Floor, 350 Dr Martin Luther King Blvd, Newark NJ
September 6-December 22, 2016

Reception Thursday, September 22, 5-7pm

31 Central is an unofficial arts hub for Newark – within this site many creative individuals have intersected and their resulting artworks have made an indelible mark on the city.

Artists in this exhibition:

Katrina Bello, Lowell Craig, Akintola Hanif, Stephen McKenzie, German Pitre, Kati Vilim
<http://artgallery.newark.rutgers.edu/exhibitions/31-central/>

Partner in Crime

Criminal Justice Gallery – Center for Law & Justice, 5th floor, 123 Washington Street, Newark NJ 07102
September 6-December 22, 2016

Curated by Shlomit Dror

This exhibition explores the geography of incarceration, by examining the spatial representation of prisons, through works that offer an alternative analysis and approach to the way crime, imprisonment and geography are connected. This group show contains cartographical elements questioning the sprawling developments of prisons across the United States.

Artists in this exhibition:

Josh Begley, Curtis + Ginsberg Architects, Ashley Hunt, Sable Elyse Smith, Sarah Ross
<http://artgallery.newark.rutgers.edu/exhibitions/partner-in-crime/>

The Ade Series: Ade Bunmi Gbadebo

Conklin Hall, 3rd floor, 175 University Ave, Newark NJ
April 4, 2016 – April 4, 2017

Reception Tuesday, April 12, 2016 6pm-8pm

Curated by Adrienne Wheeler

Ade Bunmi Gbadebo is an emerging artist and student at the School of Visual Arts in New York. Her current body of work was propelled by an experience of becoming hyper-aware of her own Blackness in a white society. She writes, *"I cut off my permed straight hair to make room for buds of nappy dark brown tresses. I stopped using paint in my art because historically, the dominant history of paint has rejected me. I stopped making beautiful self-portraits and used art to question beauty and who gets the power to decide that beauty."*

This exhibition was made possible by funding from Chancellor Nancy Cantor's Seed Grant Initiative.
<http://artgallery.newark.rutgers.edu/exhibitions/the-ade-series-ade-bunmi-gbadebo/>

Paul Robeson Galleries

MEDIA RELEASE

Articulations: Jaz Graf

Engelhard Hall, 1st floor, 190 University Ave, Newark, NJ

September 6, 2016 – July 31, 2017

Reception Thursday, October 20, 5-7pm

Curated by Adrienne Wheeler

Jaz Graf works in experimental techniques with paper and print, most often using language as a starting point to explore personal histories, dualities, nature, human nature, and the practice of play. In her recent and ongoing series, *Eviscera*, narratives from old sketchbooks and personal journals are transcribed and printed lithographically onto muslin, referencing an act of evisceration in which guts appear outside the body.

This exhibition was made possible by funding from Chancellor Nancy Cantor's Seed Grant Initiative.

<http://artgallery.newark.rutgers.edu/exhibitions/articulations-jaz-graf/>

Re-made Garden: Ira Wagner

Engelhard Hall, 1st floor, 190 University Ave, Newark, NJ

September 6, 2016 – July 31, 2017

Reception Thursday, October 20, 5-7pm

Curated by Shlomit Dror

In this series titled "*Garden State*", artist Ira Wagner photographed industrial landscapes in New Jersey, remote from both our consciousness and body. In these carefully composed photographs, familiar objects and sceneries take on their own shape, evoking surreal impressions. Wagner's meticulous compositions convey both documentary and fictional qualities.

This exhibition was made possible by funding from Chancellor Nancy Cantor's Seed Grant Initiative.

<http://artgallery.newark.rutgers.edu/exhibitions/re-made-garden-ira-wagner/>

Beneath Such Dreamy Moments: Joan Pamboukes

The Wall, Robeson Campus Center, 1st floor, 350 Dr Martin Luther King Blvd, Newark NJ

September 6, 2016 – July 31, 2017

Reception Thursday, September 22, 5-7pm

Curated by Shlomit Dror

This site-specific installation, by artist Joan Pamboukes, was inspired by Newark Museum's historic Ballantine House. Using common technology – iPhone and panorama app – Pamboukes investigates the effects of media and interactivity in our society. Pamboukes' depiction is distorted and fragmented, making this domestic scene imaginary and fantastic.

This exhibition was made possible by funding from Chancellor Nancy Cantor's Seed Grant Initiative and supported by New York Film Academy, nyfa.edu

<http://artgallery.newark.rutgers.edu/exhibitions/beneath-such-dreamy-moments-joan-pamboukes/>

Paul Robeson Galleries **MEDIA RELEASE**

Indivisible: Vaughn Spann

Engelhard Hall, 1st floor, 190 University Ave, Newark, NJ

September 6, 2016 – July 31, 2017

Reception Thursday, October 20, 5-7pm

Artist and Rutgers University-Newark alumnus Vaughn Spann characterizes 2016 as a hugely significant year, full of great personal blessings and tumultuous national events. Spann writes, "What we need always and now more than ever is love." He continues, "Rutgers Newark sometimes gets a bad rap due to geographic factors. I chose the Rutgers Newark campus because I believed in everything it had to offer and didn't let anything taint my opinion. I often called Newark a 'hidden gem' because many people assume the goods are solely in New Brunswick but that couldn't be any further from the truth!"

This mural was commissioned by the Rutgers University Office of Admissions in collaboration with the Paul Robeson Galleries.

<http://artgallery.newark.rutgers.edu/exhibitions/indivisible-vaughn-spann/>

Images are available for media use; please contact Caren King Choi, Associate Director of Programs,
Telephone 973 353 1625, Email carking@rutgers.edu

ALL PAUL ROBESON GALLERIES EXHIBITIONS ARE FREE AND OPEN TO THE PUBLIC

Gallery Website <http://artgallery.newark.rutgers.edu/>

For additional information please contact:

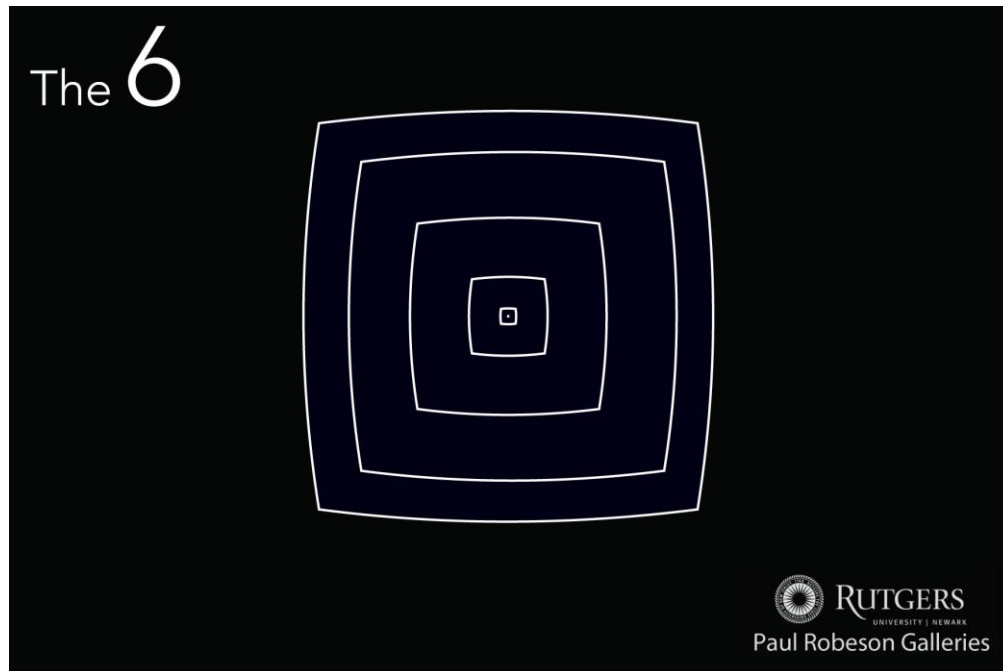
Carla Capizzi, Senior Public Relations Specialist, Telephone 973 353 x17, Email capizzi@andromeda.rutgers.edu

Anonda Bell, Director & Curator, Paul Robeson Galleries, Telephone 973 353 1609, Email anonda@andromeda.rutgers.edu

The Paul Robeson Galleries' programs are supported, in part, by a grant from the New Jersey State Council on the Arts/Department of State, a Partner Agency of the National Endowment for the Arts, the Geraldine R. Dodge Foundation, and by private donations.

We are also supported by Express Newark, the Robeson Campus Center, and the Cultural Programming Committee, Rutgers University-Newark.





The 6: BFA Fine Arts Exhibition

Main Gallery – April 30 – May 14, 2015

Reception Thursday, April 30, 2015 5pm-7pm

The Paul Robeson Galleries presents the works of six Bachelor of Fine Arts students. Each of these students chose to address a different concept in their work. With a range spanning the flow of energy to personal identity, this year's graduating students aim to illuminate aspects of the world around us.

Artists in this exhibition: Patricia Arias-Reynolds, Austin Gilker, Zamar Khan, Sarah Lamont, Bryant Lebron, and Sasha Pratt

<http://artgallery.newark.rutgers.edu/exhibitions/>

S A T E L L I T E E X H I B I T I O N S

Healing Through Art: A Collaborative Exhibition

Orbit 1 Gallery

January 20 – July 30, 2015

Reception Thursday, January 29, 2015 5pm-7pm

This juried exhibition is a collaboration between the Healing Arts Program of Atlantic Health System and Paul Robeson Galleries of Rutgers University-Newark. To celebrate their shared vision for art and its engagement with the community, Healing Arts and Paul Robeson Galleries invited artists from the community and around the world to share their vision of the restorative effects of art. Many artists have experienced art-making as a healing tool to help them navigate through life's physical and emotional difficulties and to improve their spirit and well-being.

Artists in this exhibition: Mini Arora, Sandra Deanda, Jane Dell, Chloë Feldman Emison, Rida Fatima, Michael S. Fenton, Kate Matthiesen, Trung Pham, Kathleen Rebek, Karen Starrett, Ellen Waldstein, Florence Weisz, and Jave Yoshimoto.

<http://artgallery.newark.rutgers.edu/exhibitions/>

Fertile Soil

Orbit 2 Gallery

January 20 – July 30, 2015

Reception Thursday, January 29, 2015 5pm-7pm

In 2014 the world lost two great female artists, Maya Angelou and Ruby Dee. Not only were they artists, but also political and social activists. This exhibition, curated by Gladys Grauer, coincides with the Women in Media Film Festival and features four female New Jersey artists.

Artists in this exhibition: Yvette Lucas, Rosalind Nzinga Nichol, Sarah Petruziello, Nette Forne Thomas

<http://artgallery.newark.rutgers.edu/exhibitions/>

Sojourn: Linda Hu & Krissia Thaiane

U-Gallery

September 2, 2014 – May 2015

Though vastly different in style and medium, both Linda Hu and Krissia Thaiane's practices are marked by a meditative, progressive building-out from simplicity to complexity. These emerging artists are recent graduates from Rutgers University-Newark's Department of Arts, Culture and Media.

The bulk of Linda Hu's work consists of traditional pen and ink on paper. The black and white drawings expose a practice that is obsessive and precise, with complex detail rippling outward from a foundational framework. The long periods of strenuous and meditative concentration, she writes, "provide the time and quiet for me to construct connections with people, ideas, environments."

Krissia Thaiane writes, "My work explores the strength and frailty of the fabric of family and tradition through knitted industrial materials." Each individual knot is magnified by the ponderousness of the materials and multiplied by the outsized act of knitting, drawing attention to the relationship between part and whole.

<http://artgallery.newark.rutgers.edu/exhibitions/>

Our Common Cause

Rutgers University – Newark Students Engaging Women's Health in Nicaragua: Spring 2015

Pequod Deck Gallery

February 16 – July 30, 2015

An exhibition of photographs documenting a seven-day International Service Learning and Leadership Exchange, in which Rutgers University-Newark students worked to improve health conditions for mothers and children in Managua, Nicaragua

<http://artgallery.newark.rutgers.edu/exhibitions/>

Clark Stoeckly: The United States Versus Private Chelsea Manning

Criminal Justice Gallery

Center for Law and Justice, 5th floor, 123 Washington Street, Newark NJ

January 20 – July 30, 2015

Drawing and writing in real time from inside the courtroom, artist and WikiLeaks activist Clark Stoeckley here captures first-hand the extraordinary drama of The United States vs. Private Chelsea Manning, one of the most important and secretive trials in American history.

In the course of the trial, Private Manning insists that her release of the Iraq and Afghanistan war logs to WikiLeaks was an act of conscience, justified by the urgent need to reveal to the world the atrocities committed by the US military in the ostensible cause of freedom. At the prosecution table, military lawyers for the American government seek to set an example and discourage future whistleblowers by locking away Manning for decades, possibly the rest of her life.

<http://artgallery.newark.rutgers.edu/exhibitions/>

Under/Over: Dahlia Elsayed

Messier Gallery

Robeson Campus Center, 3rd Floor

September 2, 2014 – July 30, 2015

Dahlia Elsayed writes, "The murals are all based around the idea of celebrating the brutalist architecture of the Newark Campus. The much-maligned architectural style features strong geometric shapes, repetition of modular elements, and raw materials. I wanted to use the physical experience of walking around the campus and viewing the buildings from multiple points—from eye level, from above and from below. So the painted shapes that appear on the walls are directly linked to those research navigations and echo the shapes of the buildings—the side view of the concrete awning on Boyden Hall, the thin windows in between concrete slabs of the Dana Library, the overhang of the roof of Smith Hall, etc. There are also references to the natural elements (day sky/night sky) but these too are presented in hard-edged forms, echoing the architectural shapes. The three walls of the mural present three different readings of the sketches made during those walks. One is presented as a long panorama/scroll, another as a triptych, and the third as an unbound diagram. The title Under/Over relates to the different viewpoints when I was looking at the buildings and also to the formal elements and painting process of the murals."

<http://artgallery.newark.rutgers.edu/exhibitions/>

The Nova Gallery

The Nova Gallery features a display of works by participants in Paul Robeson Galleries' outreach and education programs.

Images are available for media use; please contact Caren King Choi, Gallery Manager & Education Coordinator,
Telephone 973 353 1625, Email carking@rutgers.edu

ALL PAUL ROBESON GALLERIES EXHIBITIONS ARE FREE AND OPEN TO THE PUBLIC

Gallery Website <http://artgallery.newark.rutgers.edu/>

For additional information please contact:

Carla Capizzi, Senior Public Relations Specialist, Telephone 973 353 x17, Email capizzi@andromeda.rutgers.edu

Anonda Bell, Director & Curator, Paul Robeson Galleries, Telephone 973 353 1609, Email anonda@andromeda.rutgers.edu

The Paul Robeson Galleries' programs are supported, in part, by a grant from the New Jersey State Council on the Arts/Department of State, a Partner Agency of the National Endowment for the Arts, the Geraldine R. Dodge Foundation, and by private donations. We are also supported by the Robeson Campus Center, the Faculty of Arts & Sciences, and the Cultural Programming Committee, Rutgers University-Newark.



FALL EXHIBITIONS 2016

31 Central

Main Gallery, Robeson Campus Center, 1st Floor, 350 Dr Martin Luther King Blvd, Newark NJ

September 6-December 22, 2016

Reception Thursday, September 22, 5-7pm

31 Central is an unofficial arts hub for Newark – within this site many creative individuals have intersected and their resulting artworks have made an indelible mark on the city.

Artists in this exhibition:

Katrina Bello, Lowell Craig, Akintola Hanif, Stephen McKenzie, German Pitre, Kati Vilim

<http://artgallery.newark.rutgers.edu/exhibitions/31-central/>

Partner in Crime

Criminal Justice Gallery – Center for Law & Justice, 5th floor, 123 Washington Street, Newark NJ 07102

September 6-December 22, 2016

Curated by Shlomit Dror

This exhibition explores the geography of incarceration, by examining the spatial representation of prisons, through works that offer an alternative analysis and approach to the way crime, imprisonment and geography are connected. This group show contains cartographical elements questioning the sprawling developments of prisons across the United States.

Artists in this exhibition:

Josh Begley, Curtis + Ginsberg Architects, Ashley Hunt, Sable Elyse Smith, Sarah Ross

<http://artgallery.newark.rutgers.edu/exhibitions/partner-in-crime/>

The Ade Series: Ade Bunmi Gbadebo

Conklin Hall, 3rd floor, 175 University Ave, Newark NJ

April 4, 2016 – April 4, 2017

Reception Tuesday, April 12, 2016 6pm-8pm

Curated by Adrienne Wheeler

Ade Bunmi Gbadebo is an emerging artist and student at the School of Visual Arts in New York. Her current body of work was propelled by an experience of becoming hyper-aware of her own Blackness in a white society. She writes, *"I cut off my permed straight hair to make room for buds of nappy dark brown tresses. I stopped using paint in my art because historically, the dominant history of paint has rejected me. I stopped making beautiful self-portraits and used art to question beauty and who gets the power to decide that beauty."*

This exhibition was made possible by funding from Chancellor Nancy Cantor's Seed Grant Initiative.

<http://artgallery.newark.rutgers.edu/exhibitions/the-ade-series-ade-bunmi-gbadebo/>

Paul Robeson Galleries

MEDIA RELEASE

Articulations: Jaz Graf

Engelhard Hall, 1st floor, 190 University Ave, Newark, NJ

September 6, 2016 – July 31, 2017

Reception Thursday, October 20, 5-7pm

Curated by Adrienne Wheeler

Jaz Graf works in experimental techniques with paper and print, most often using language as a starting point to explore personal histories, dualities, nature, human nature, and the practice of play. In her recent and ongoing series, *Eviscera*, narratives from old sketchbooks and personal journals are transcribed and printed lithographically onto muslin, referencing an act of evisceration in which guts appear outside the body.

This exhibition was made possible by funding from Chancellor Nancy Cantor's Seed Grant Initiative.

<http://artgallery.newark.rutgers.edu/exhibitions/articulations-jaz-graf/>

Re-made Garden: Ira Wagner

Engelhard Hall, 1st floor, 190 University Ave, Newark, NJ

September 6, 2016 – July 31, 2017

Reception Thursday, October 20, 5-7pm

Curated by Shlomit Dror

In this series titled "*Garden State*", artist Ira Wagner photographed industrial landscapes in New Jersey, remote from both our consciousness and body. In these carefully composed photographs, familiar objects and sceneries take on their own shape, evoking surreal impressions. Wagner's meticulous compositions convey both documentary and fictional qualities.

This exhibition was made possible by funding from Chancellor Nancy Cantor's Seed Grant Initiative.

<http://artgallery.newark.rutgers.edu/exhibitions/re-made-garden-ira-wagner/>

Beneath Such Dreamy Moments: Joan Pamboukes

The Wall, Robeson Campus Center, 1st floor, 350 Dr Martin Luther King Blvd, Newark NJ

September 6, 2016 – July 31, 2017

Reception Thursday, September 22, 5-7pm

Curated by Shlomit Dror

This site-specific installation, by artist Joan Pamboukes, was inspired by Newark Museum's historic Ballantine House. Using common technology – iPhone and panorama app – Pamboukes investigates the effects of media and interactivity in our society. Pamboukes' depiction is distorted and fragmented, making this domestic scene imaginary and fantastic.

This exhibition was made possible by funding from Chancellor Nancy Cantor's Seed Grant Initiative and supported by New York Film Academy, nyfa.edu

<http://artgallery.newark.rutgers.edu/exhibitions/beneath-such-dreamy-moments-joan-pamboukes/>

Paul Robeson Galleries **MEDIA RELEASE**

Indivisible: Vaughn Spann

Engelhard Hall, 1st floor, 190 University Ave, Newark, NJ

September 6, 2016 – July 31, 2017

Reception Thursday, October 20, 5-7pm

Artist and Rutgers University-Newark alumnus Vaughn Spann characterizes 2016 as a hugely significant year, full of great personal blessings and tumultuous national events. Spann writes, "What we need always and now more than ever is love." He continues, "Rutgers Newark sometimes gets a bad rap due to geographic factors. I chose the Rutgers Newark campus because I believed in everything it had to offer and didn't let anything taint my opinion. I often called Newark a 'hidden gem' because many people assume the goods are solely in New Brunswick but that couldn't be any further from the truth!"

This mural was commissioned by the Rutgers University Office of Admissions in collaboration with the Paul Robeson Galleries.

<http://artgallery.newark.rutgers.edu/exhibitions/indivisible-vaughn-spann/>

Images are available for media use; please contact Caren King Choi, Associate Director of Programs,
Telephone 973 353 1625, Email carking@rutgers.edu

ALL PAUL ROBESON GALLERIES EXHIBITIONS ARE FREE AND OPEN TO THE PUBLIC

Gallery Website <http://artgallery.newark.rutgers.edu/>

For additional information please contact:

Carla Capizzi, Senior Public Relations Specialist, Telephone 973 353 x17, Email capizzi@andromeda.rutgers.edu

Anonda Bell, Director & Curator, Paul Robeson Galleries, Telephone 973 353 1609, Email anonda@andromeda.rutgers.edu

The Paul Robeson Galleries' programs are supported, in part, by a grant from the New Jersey State Council on the Arts/Department of State, a Partner Agency of the National Endowment for the Arts, the Geraldine R. Dodge Foundation, and by private donations.

We are also supported by Express Newark, the Robeson Campus Center, and the Cultural Programming Committee, Rutgers University-Newark.



MARCH & APRIL EXHIBITIONS
2016

Fine Arts Senior Thesis Exhibition 2016

Main Gallery

March 31-April 14, 2016

Reception Thursday, March 31, 2016 5pm-7pm

An annual exhibition of work from Fine Arts Seniors in the Department of Arts, Culture & Media at Rutgers University – Newark.

Artists in this exhibition: Patricia Arias-Reynolds, Emily Ashley, Austin Gilker, Bryant Lebron, Melissa Maniego, Fatima Quteishat

<http://artgallery.newark.rutgers.edu/exhibitions/fine-art-senior-thesis-exhibition-2016/>

The Ade Series: Ade Bunmi Gbadebo

Conklin Hall 3rd floor, 175 University Ave, Newark NJ 07102

April 4, 2016 – April 4, 2017

Reception Tuesday, April 12, 2016 6pm-8pm

Curated by Adrienne Wheeler

Ade Bunmi Gbadebo is an emerging artist and student at the School of Visual Arts in New York. Her current body of work was propelled by an experience of becoming hyper-aware of her own Blackness in a white society. She writes, *"I cut off my permed straight hair to make room for buds of nappy dark brown tresses. I stopped using paint in my art because historically, the dominant history of paint has rejected me. I stopped making beautiful self-portraits and used art to question beauty and who gets the power to decide that beauty."*

This exhibition was made possible by funding from Chancellor Nancy Cantor's Seed Grant Initiative.

<http://artgallery.newark.rutgers.edu/exhibitions/the-ade-series-ade-bunmi-gbadebo/>

Curating the Future of Family & Community Health in Nicaragua

Pequod Deck Gallery

April 4 – July 29, 2016

The International Leadership Exchange (ILE) takes a select group of Rutgers University-Newark students to Nicaragua each winter to be immersed in the cultural and local leadership of family and community health centers. This exhibition of photographs conveys the sustainable and reciprocated impact as the student leaders aimed to improve health conditions for mothers and children.

<http://artgallery.newark.rutgers.edu/exhibitions/emulating-the-past-curating-the-future/>

Paul Robeson Galleries **MEDIA RELEASE**

In 24: Graphic Design Graduate Exhibition

Main Gallery

April 21-May 5, 2016

Opening Reception Thursday, April 21, 5-7pm

An annual exhibition of work to be included in the portfolios of Graphic Design Seniors from the Department of Arts, Culture & Media at Rutgers University – Newark.

Designers in this exhibition: Veronica Benavides, Mark Carrione, Michael Cocciadiferro, Jessica D'Auria Andrew Da Silva Ken Delasalas, Vaughn Ferreira, Tiffany Hale, Lucero Hernandez, Sara Montiel, Lamont Royster, Miriam Sarij, Gabrielle Thomas, and Jennifer Yacoub.

<http://artgallery.newark.rutgers.edu/exhibitions/graphic-design-senior-portfolio-exhibition-2016/>

**Images are available for media use; please contact Caren King Choi, Gallery Manager & Education Coordinator,
Telephone 973 353 1625, Email carking@rutgers.edu**

ALL PAUL ROBESON GALLERIES EXHIBITIONS ARE FREE AND OPEN TO THE PUBLIC

Gallery Website <http://artgallery.newark.rutgers.edu/>

For additional information please contact:

Carla Capizzi, Senior Public Relations Specialist, Telephone 973 353 x17, Email capizzi@andromeda.rutgers.edu

Anonda Bell, Director & Curator, Paul Robeson Galleries, Telephone 973 353 1609, Email anonda@andromeda.rutgers.edu

The Paul Robeson Galleries' programs are supported, in part, by a grant from the New Jersey State Council on the Arts/Department of State, a Partner Agency of the National Endowment for the Arts, the Geraldine R. Dodge Foundation, and by private donations. We are also supported by the Robeson Campus Center, the Faculty of Arts & Sciences, and the Cultural Programming Committee, Rutgers University-Newark.



SPRING EXHIBITIONS 2016



Catherine Chalmers, *Pile of Legs*, 2003, resin, dimensions variable, courtesy of the artist

The Undesirables

Main Gallery – January 19 – March 23, 2016

Reception Thursday, January 28, 2016 5pm-7pm

It is a reality that we all share our homes with others—people and pets, but also a large number of creatures that have taken up residence without invitation, such as mice, cockroaches, spiders, flies, and so on. This exhibition features work by artists considering our relationship to these creatures with which we commonly (and often reluctantly) cohabit in urban and suburban environments.

Artists in this exhibition: Hetty Baiz, Catherine Chalmers, Cara DeAngelis, Adam Farcus, Emily Fleisher, Lorrie Fredette, Asha Ganpat, Kate Kern, Melinda Merinsky, Antonella Piemontese, and Mary Sweeney

<http://artgallery.newark.rutgers.edu/exhibitions/the-undesirables/>

“...We Say Fight Back!” Julieta Salgado

Orbit 1 Gallery

January 19 – July 29, 2016

Reception Thursday, January 28, 2016 5pm-7pm

“...We Say Fight Back!” is an ongoing visual account of various social justice movements led by and for trans, gender non-conforming, two-spirit, and queer people of color in New York City. This particular exhibit examines the intersections of immigration, policing, and people’s access to self-determination and freedom of movement from 2013 to 2015.

<http://artgallery.newark.rutgers.edu/exhibitions/we-say-fight-back/>

Paul Robeson Galleries

MEDIA RELEASE

Women Like Jazz

Orbit 2 Gallery

January 19 – July 29, 2016

Reception Thursday, January 28, 2016 5pm-7pm

“Like jazz, women are smooth, soulful and swinging; they are masters of improvisation and they sing the blues.

As is jazz, women are ragtime, bebop, and cool. Women are jazz musicians and have jazz bands.”

Curated by Gladys Barker Grauer and presented in conjunction with Women in Media-Newark’s 7th Annual Women’s History Month Film Festival.

Artists in this exhibition: Cathleen McCoy Bristol, Bisa Butler, Evelyn Graves, Grace Graupe Pillard, Donna Conklin King, Toni Thomas

<http://artgallery.newark.rutgers.edu/exhibitions/women-like-jazz/>

Rutgers University-Newark Students Engaging Rural Sustainability Projects

Pequod Deck Gallery

November 9, 2015 – March 29, 2016

The International Leadership Exchange (ILE) initiative to India allows students to critically explore various forms of grassroots community leadership within India with the intent of understanding how communities can effectively create sustainable initiatives that address their needs. This exhibition of pictures showcases the transformative journey of Rutgers University – Newark Students as they strive to create global impact in India.

<http://artgallery.newark.rutgers.edu/exhibitions/rutgers-university-newark-students-engaging-rural-sustainability-projects/>

Images are available for media use; please contact Caren King Choi, Gallery Manager & Education Coordinator, Telephone 973 353 1625, Email cariking@rutgers.edu

ALL PAUL ROBESON GALLERIES EXHIBITIONS ARE FREE AND OPEN TO THE PUBLIC

Gallery Website <http://artgallery.newark.rutgers.edu/>

For additional information please contact:

Carla Capizzi, Senior Public Relations Specialist, Telephone 973 353 x17, Email capizzi@andromeda.rutgers.edu

Anonda Bell, Director & Curator, Paul Robeson Galleries, Telephone 973 353 1609, Email anonda@andromeda.rutgers.edu

The Paul Robeson Galleries’ programs are supported, in part, by a grant from the New Jersey State Council on the Arts/Department of State, a Partner Agency of the National Endowment for the Arts, the Geraldine R. Dodge Foundation, and by private donations. We are also supported by the Robeson Campus Center, the Faculty of Arts & Sciences, and the Cultural Programming Committee, Rutgers University-Newark.

